

Infographic
Introduction
By Erik Tuckow

Exercise 1 - draw a tiny chart of a part of your life

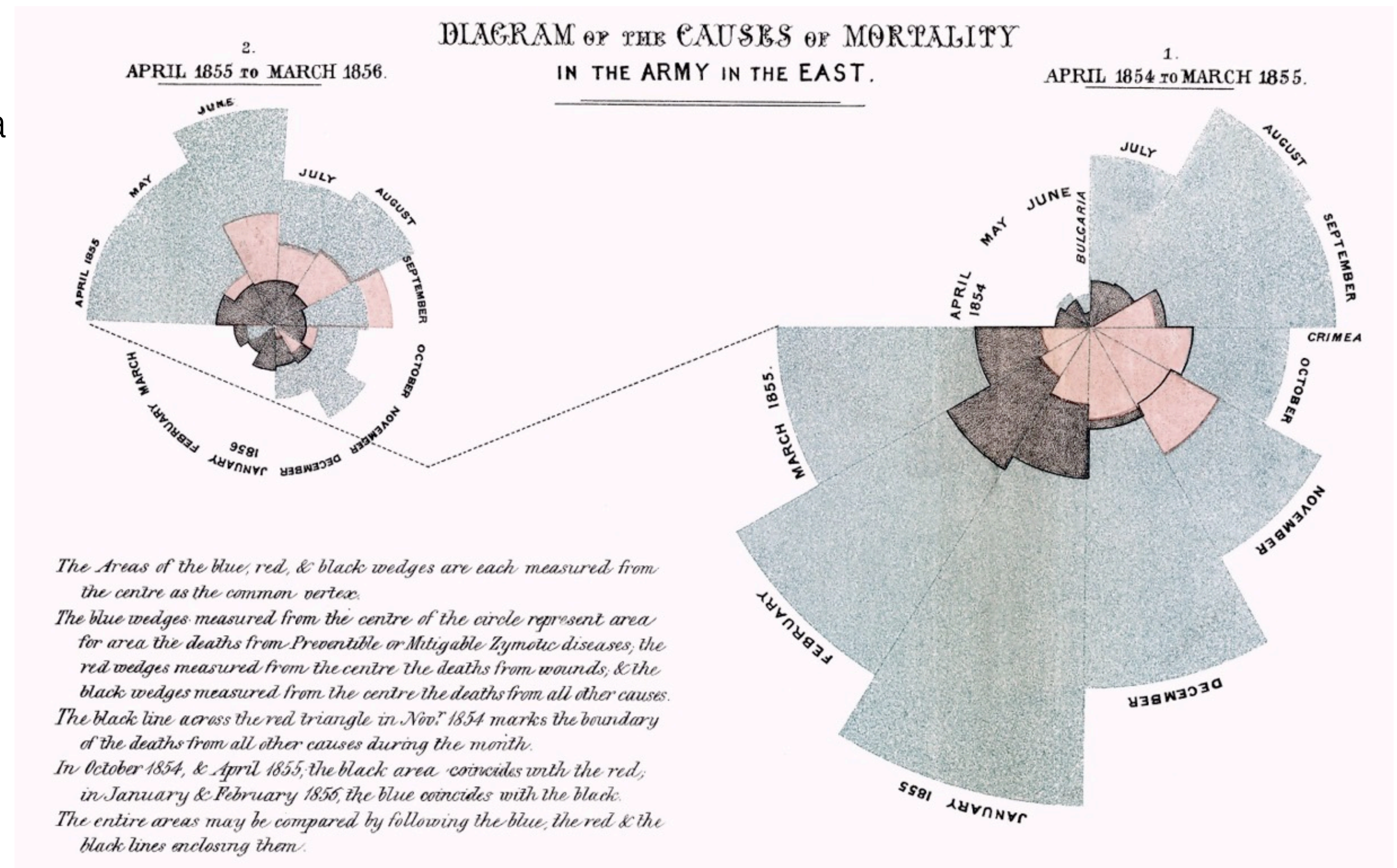
Now, please create a tiny chart of your life and answer one of the following question. Scribble on a paper, if possible the description in English, write your name in big Letter on the scribble, take a photo and import it to miro or send me a signal message with the photo.

- Where have you life until now?
- How is your workflow?
- What kind of doors did you pass trough the way to your work?
- How is your Work-life-Balance?
- How do you use your mobile?
- How locks like your daily mobility?
- How many man and woman have you seen yesterday?
- How much of your dream have you realized?

Infographic have the power to change the mind!

- Polar-area-diagram
- every pie piece is a month, divided in three parts.
- red: wounding
- black: other
- blue: infection
- the scale is the longitudinal axis of the pie pieces

Is it allowed to show the data like this?
Is it manipulative?



Infographics have the power to change the mind!

"To effect through the eyes what we cannot convey to the public through their ears, which are sealed against words"

Florence Nightingale, Nurse

*The Areas of the blue, red, & black wedges are each measured from the centre as the common vertex.
The blue wedges measured from the centre of the circle represent area for area the deaths from Preventible or Mitigable Zymotic diseases; the red wedges measured from the centre the deaths from wounds; & the black wedges measured from the centre the deaths from all other causes.
The black line across the red triangle in Nov. 1854 marks the boundary of the deaths from all other causes during the month.
In October 1854, & April 1855, the black area coincides with the red; in January & February 1856, the blue coincides with the black.
The entire areas may be compared by following the blue, the red & the black lines enclosing them.*

DIAGRAM OF THE CAUSES OF MORTALITY
IN THE ARMY IN THE EAST.

2.
APRIL 1855 to MARCH 1856.

APRIL 1854



Florence Nightingale

Why are we using infographics?

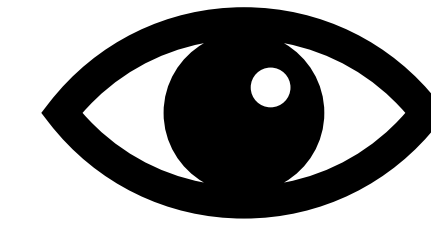
- to inform
- to explain
- to convince
- to tell the truth
- to get attention
- ~~to emotionalize~~



www.coming-soon.be

Why are we using infographics?

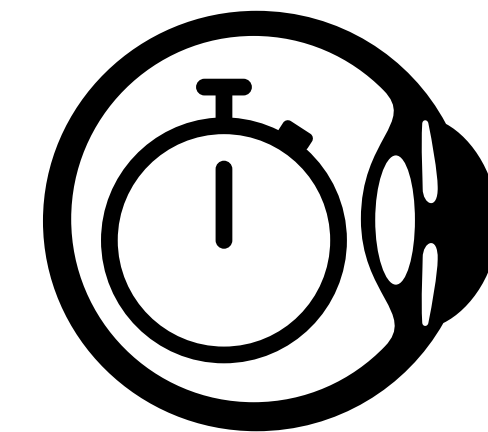
- humans recognize their environment with the eyes



70% of sensory receptors are in the eyes



50% of the brain have to work with visual perception



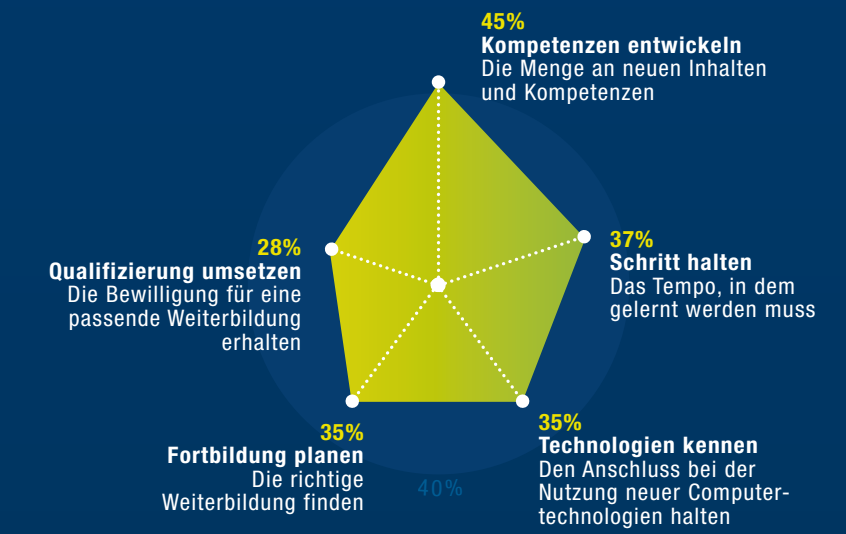
0,01 sec. We need to understand a visual scene

Why are infographics so *super* ?

- they seem to be serious ★ ★ ★
 - people believe diagrams
 - they show comparison
 - **color** is faster than content!
- ... and we love to solve puzzles!

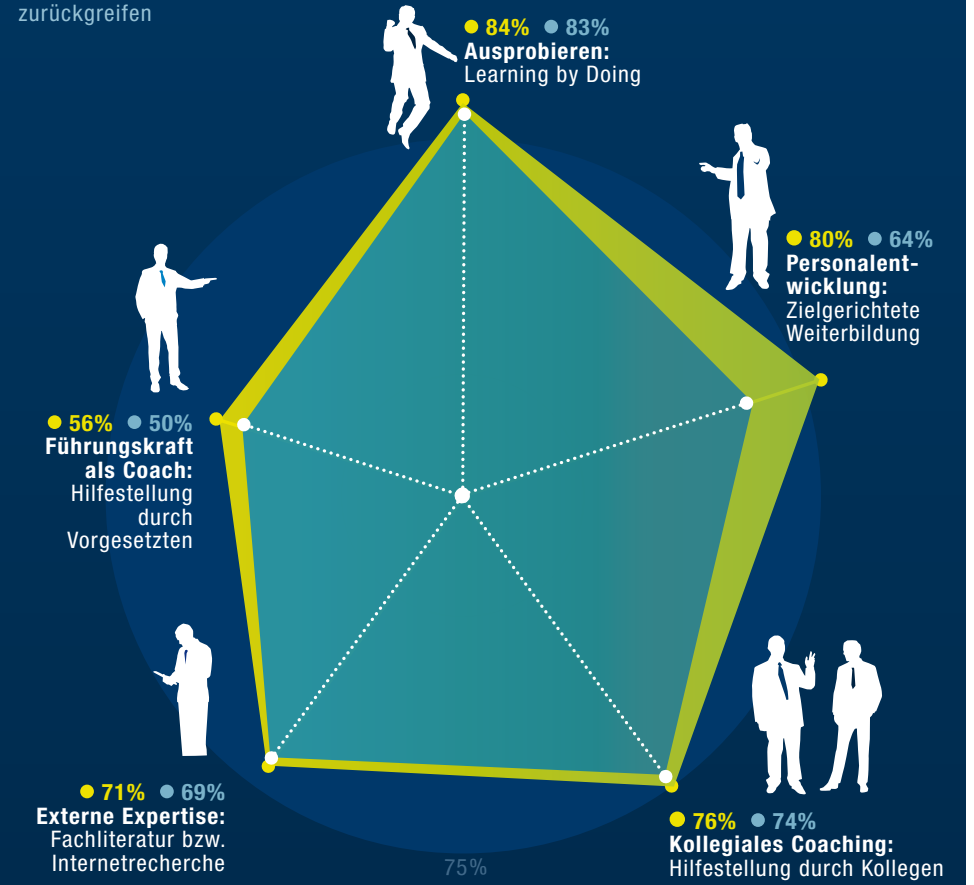
GRÖSSTE HERAUSFORDERUNGEN

Dies sind besonders große Schwierigkeiten bei Veränderungen im Berufsalltag



WUNSCH UND WIRKLICHKEIT

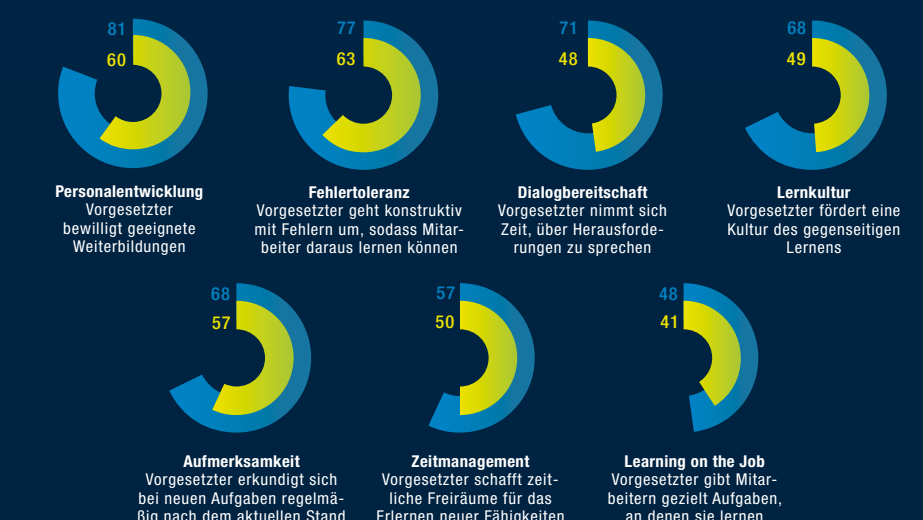
● Wunsch: So wollen Angestellte neue Herausforderungen bewältigen
 ● Wirklichkeit: Auf diese Maßnahmen können Angestellte im Berufsalltag zurückgreifen



HILFE VOM CHEF

Bekommen Unterstützung
Diese Unterstützung erhalten Angestellte von ihrem Vorgesetzten
 JA 69% NEIN 28%

Wünschen sich Unterstützung
Diese Unterstützung wünschen sich Angestellte, um neue Herausforderungen zu bewältigen



Quelle: Bundesweite forsa-Umfrage im Auftrag der Haufe Akademie, Oktober 2014. Befragt wurden 1.001 Angestellte ab 18 Jahren

What is most important for a good visualization?

to tell an
emotional story

A

to show Data
exactly

B

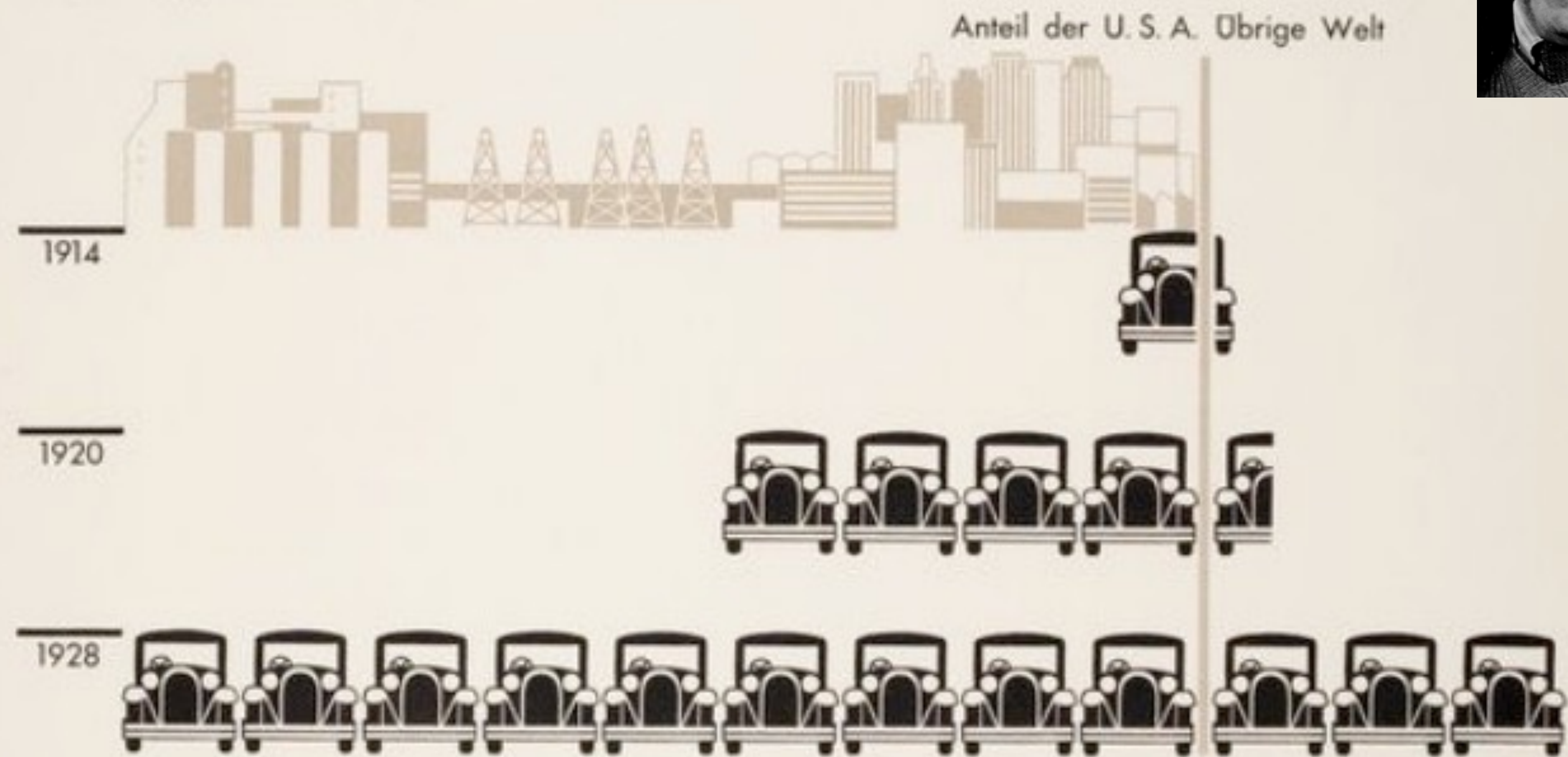
to find out the
best comparison

C

"... to remember simplified set pictures is better than forgetting exact numbers."

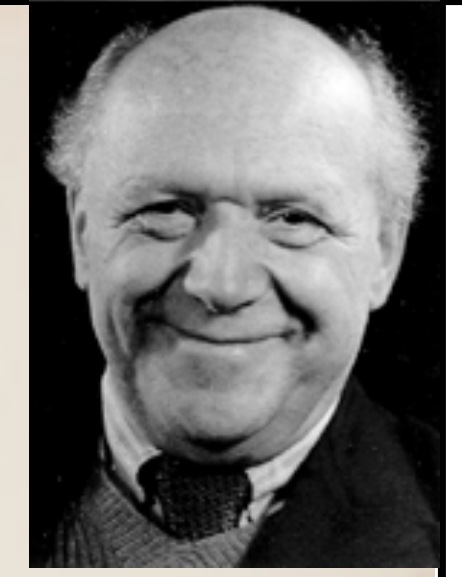
Otto Neurath (isotype)
Sociologist and economist
1929

Kraftwagenbestand der Erde

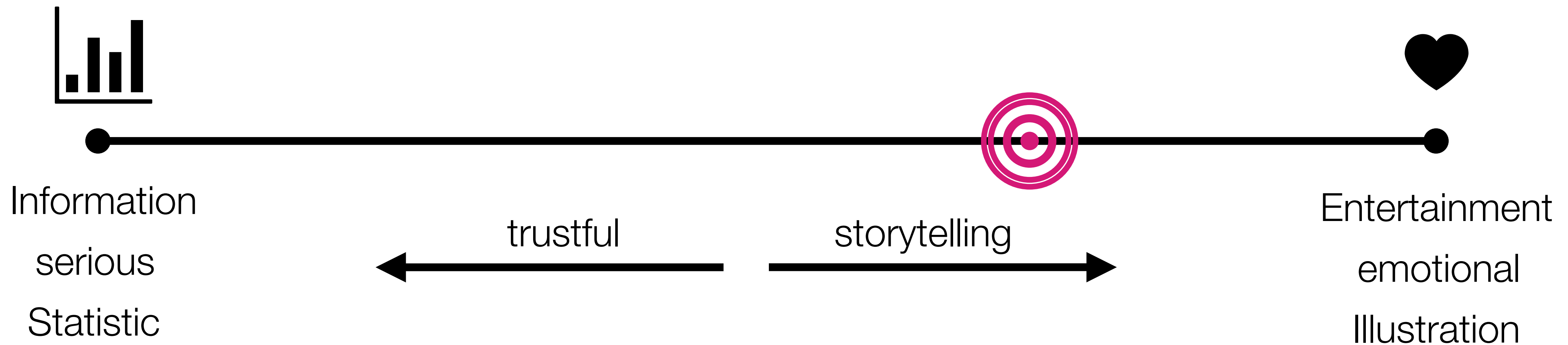


Jedes Auto 2 500 000 Kraftwagen

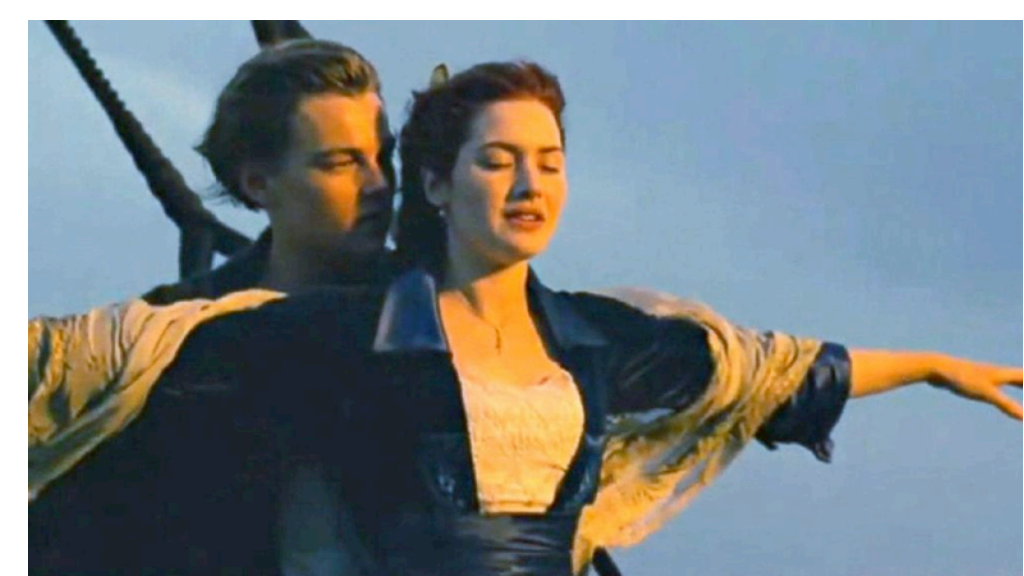
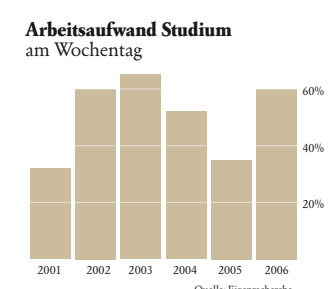
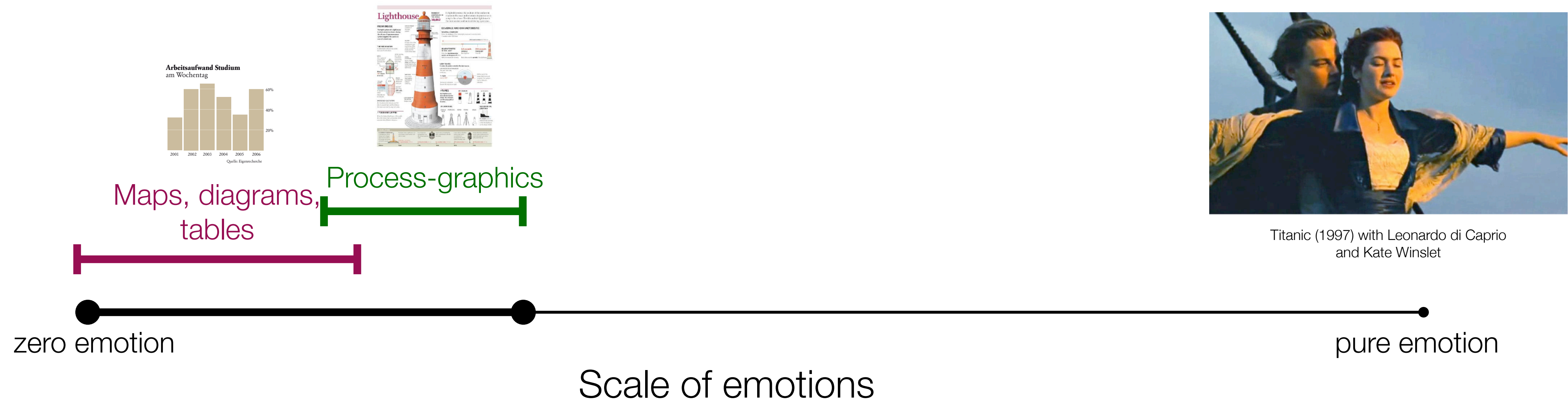
Angabe für die Weltkarte der Welt 1928, Verlag
Geographische und Wirtschaftswissenschaften in Wien



How to use - is your decision!

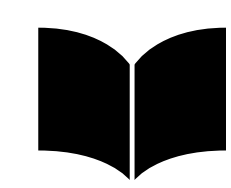


Emotional potential of infographics



It is important to know the medium!

Print



Magazine

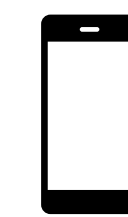
conscious
decision to read
the article

Digital



Website

conscious
decision to visit
the side



Socialmedia

Short Attention
*Used on a mobil
with distracting
environment*

Difference between complexity and reduction

The empire strikes back

The visualization explores historically, geographically and demographically twenty-one great empires born over the last 2,500 years. Empires are visualized according to the period and reason of their demise. Further information concerning size, population, government and geography are presented visually for each imperium.

How to read it?

temporal axis 550 BC to present

empire vertically ordered by fall-date

consecutive empires

historical periods

each empire is visualized according to specific parameters:

- Europe
- Asia
- Africa
- North America
- South America
- Oceania
- Antarctica

width = longevity

height = maximum expansion (area)

Empire Name

main capital

fall-date

fall cause

date of maximum expansion

maximum population = 20 million of inhabitants

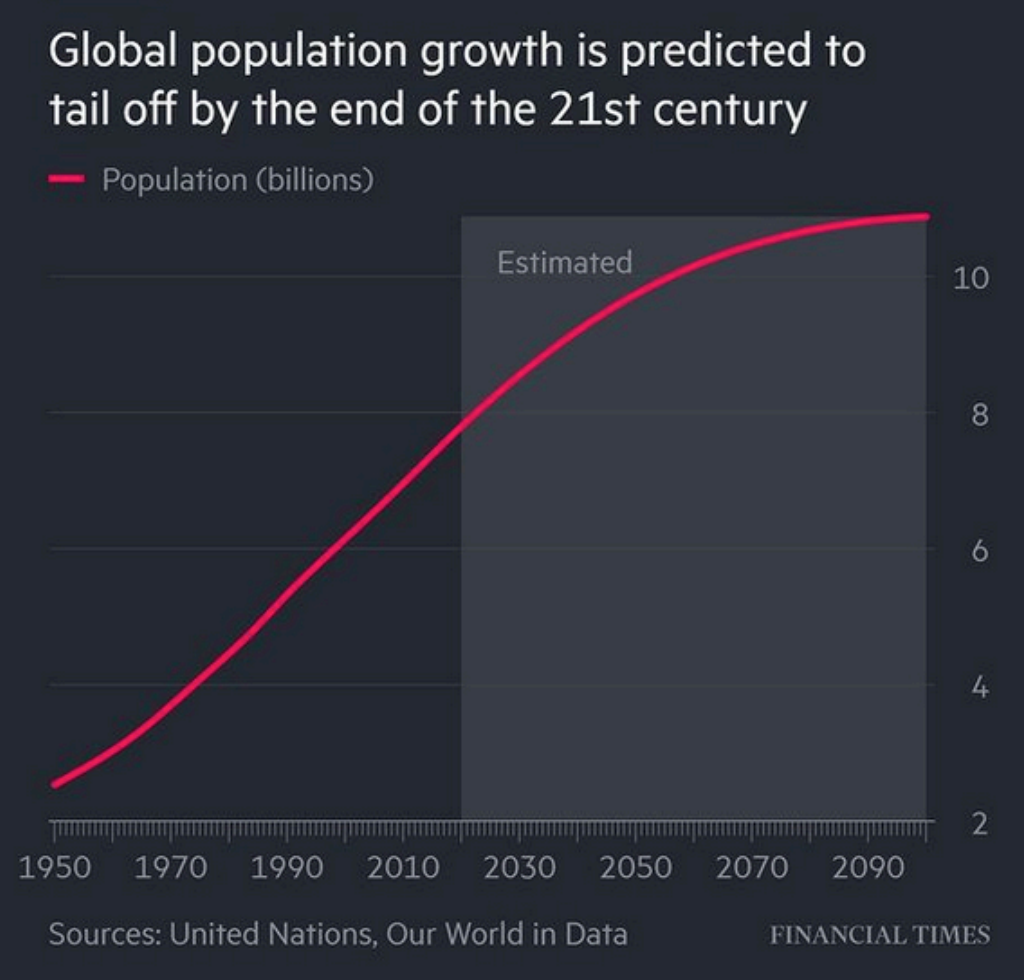
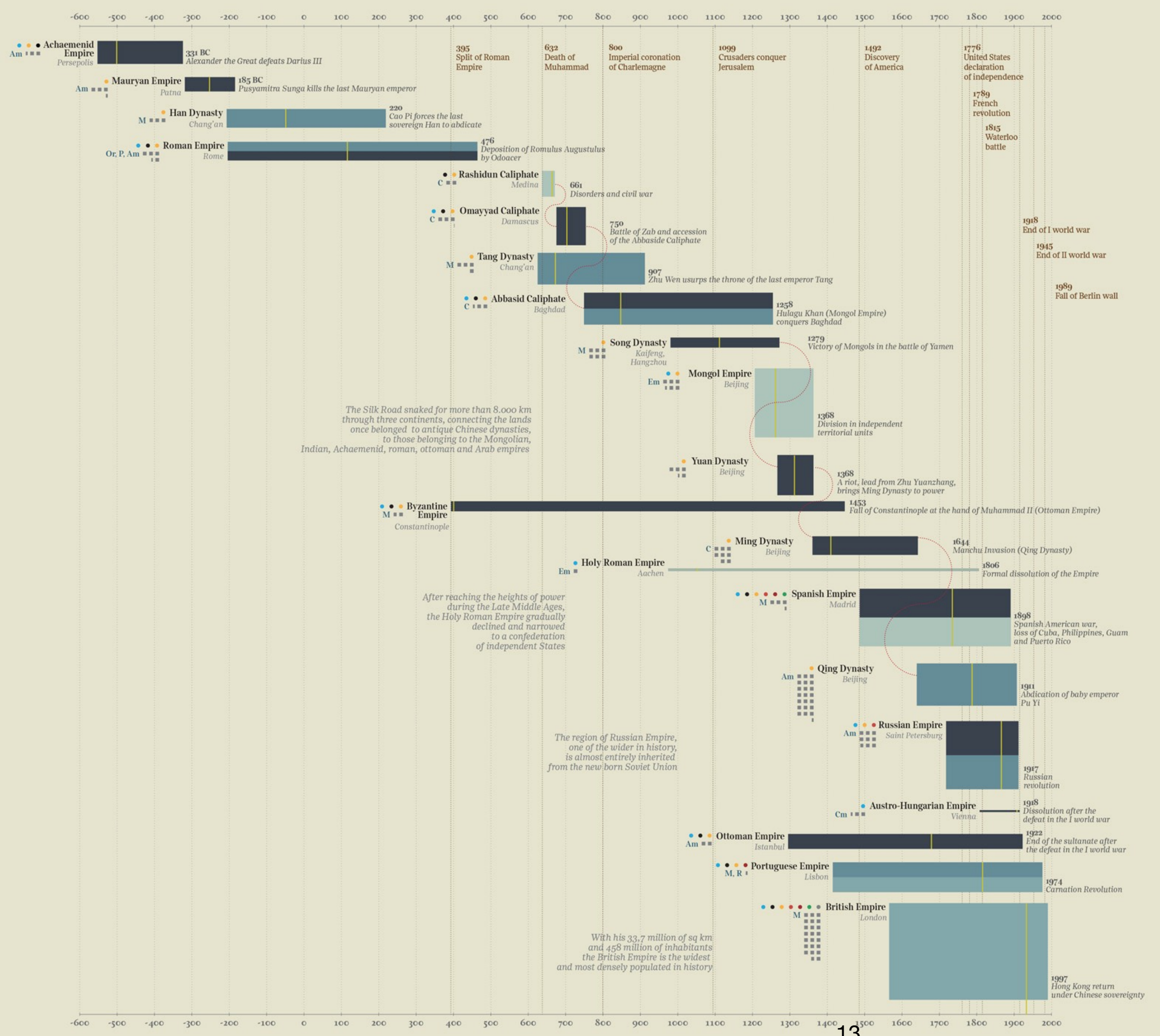
cause of the fall

- war
- inner disorders
- colony independence
- division
- formal dissolution

type of government

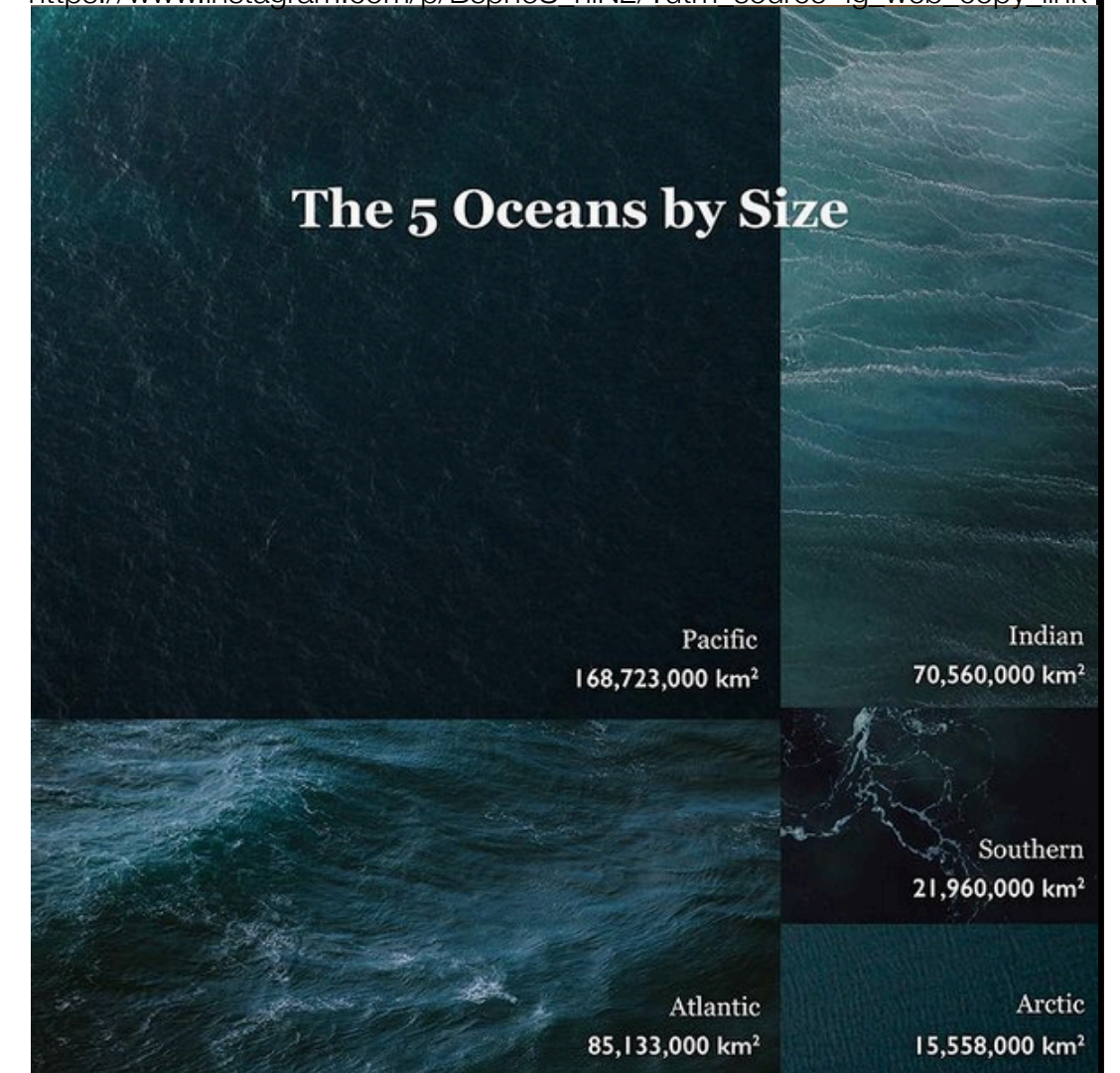
- M monarchy
- Am absolute monarchy
- Em elective monarchy
- Cm constitutional monarchy
- R republic
- Or oligarchical republic
- P principdom
- C caliphate

The visualization has been designed and produced by Accurat (www.accurat.it), and was originally published in Italian on La Lettura the Sunday cultural supplement of Corriere della Sera.



Financial Times https://www.instagram.com/p/CRWcWIZrYG/?utm_source=ig_web_copy_link

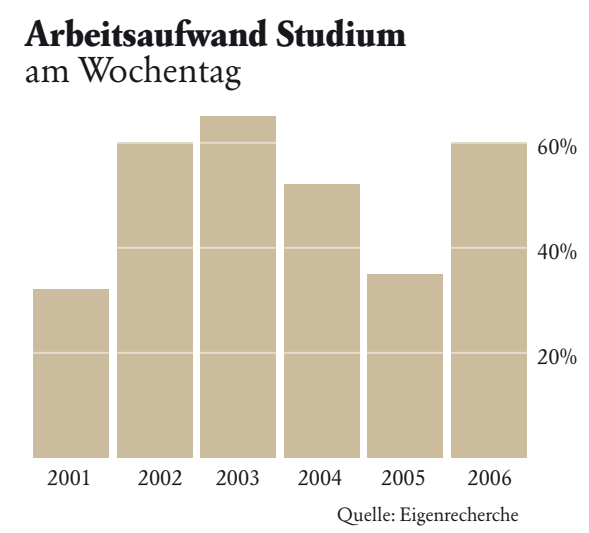
https://www.instagram.com/p/Bspn6S_nIN2/?utm_source=ig_web_copy_link



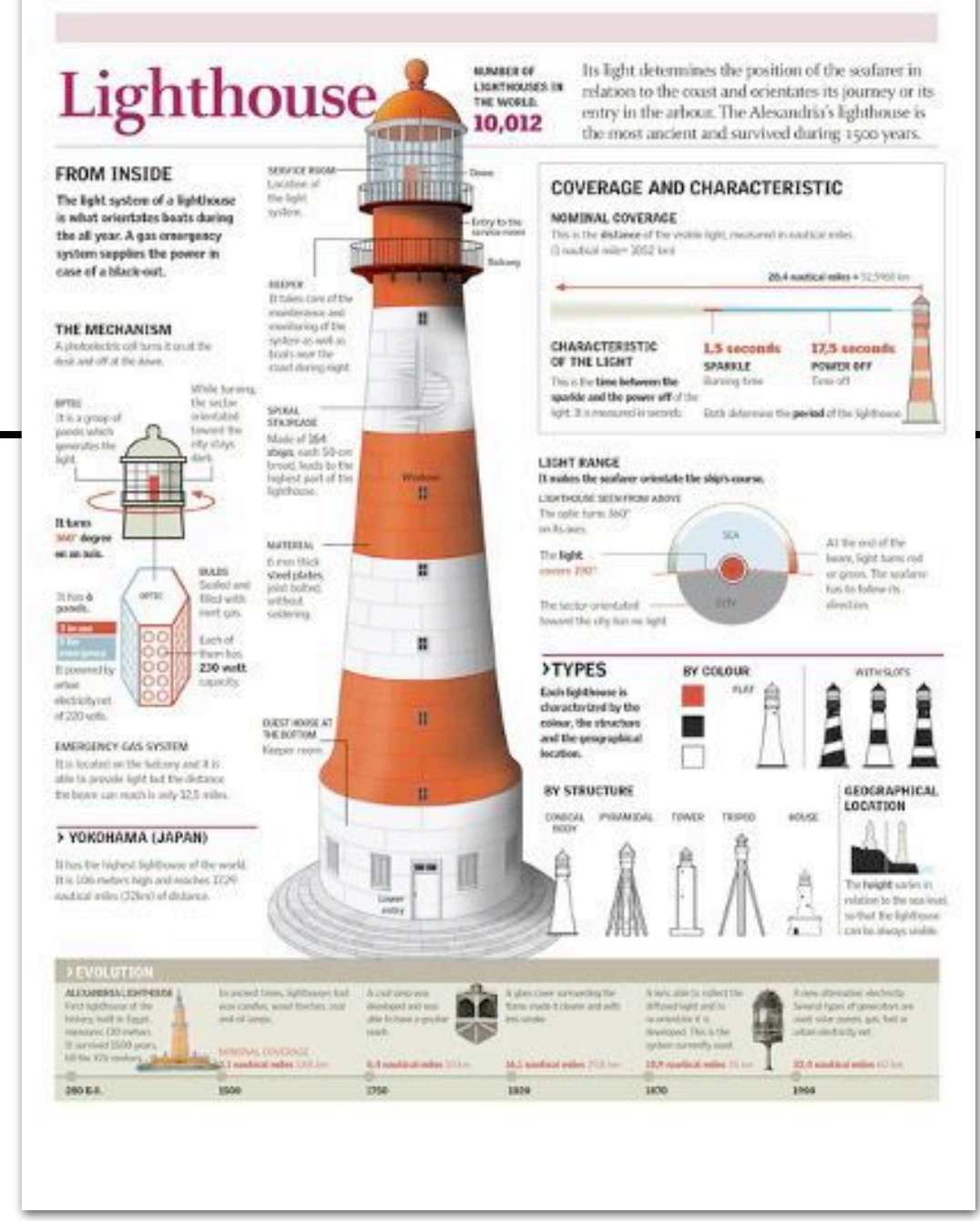
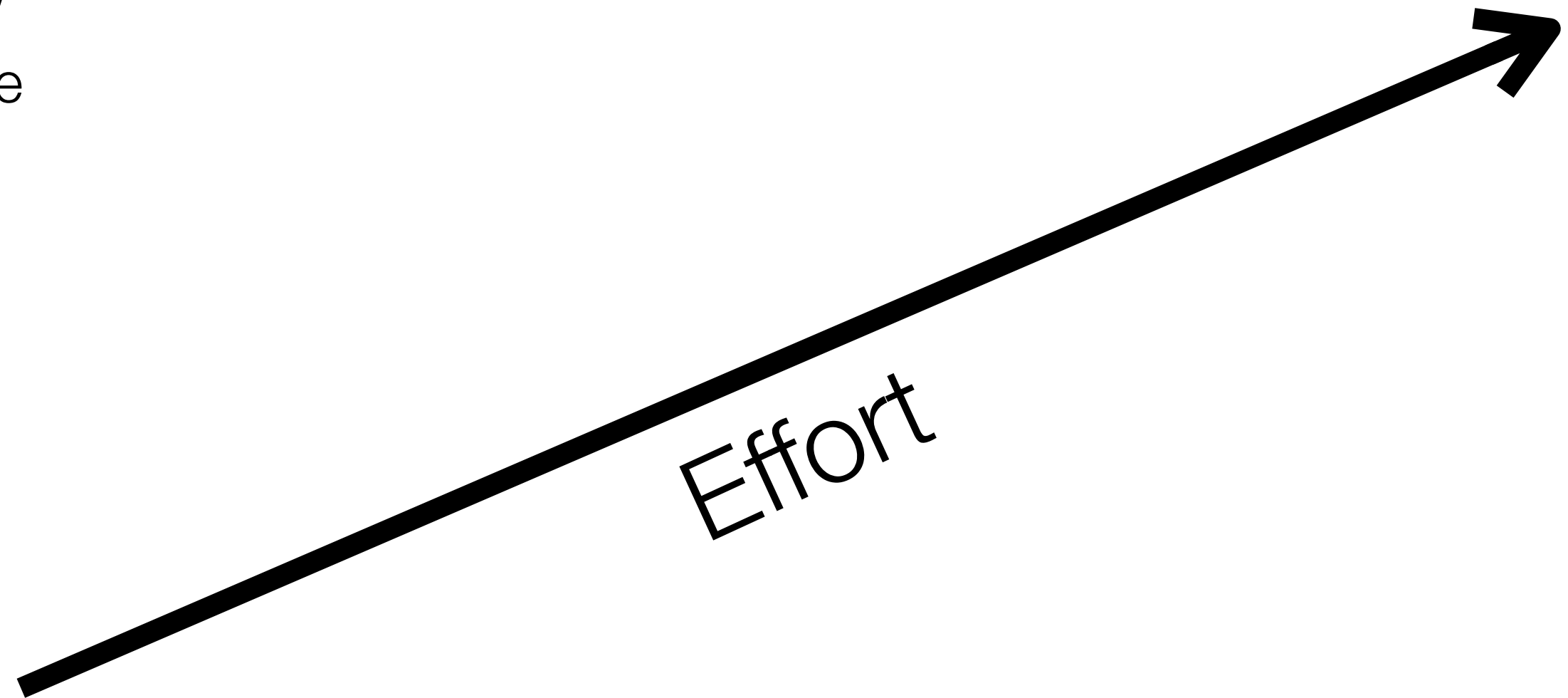
Giorgia Lupi
Accurat

Two kind of infographics

- ⊕ Flexible & Standard
- ⊕ Fast understandable
- ⊕ Designelement
- ⊕ Give the report a trend
- ⊕ Standard workflow
- ⊕ Develop just in time
- ⊖ Seems boring



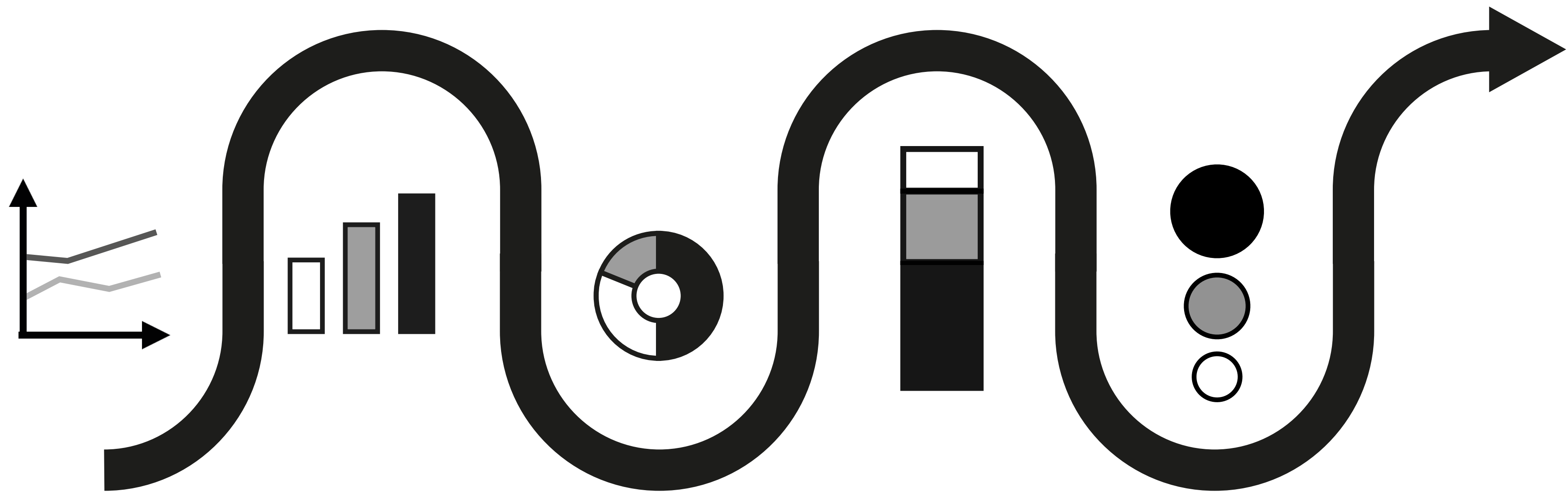
A B C



Lighthouse

- ⊕ Unique
- ⊕ Complex
- ⊕ Attention (key visual)
- ⊕ Powerful
- ⊖ Extremely high effort

How to start the process of creation



Exercise 2 - find a form for a small dataset

German elections on next Sunday.

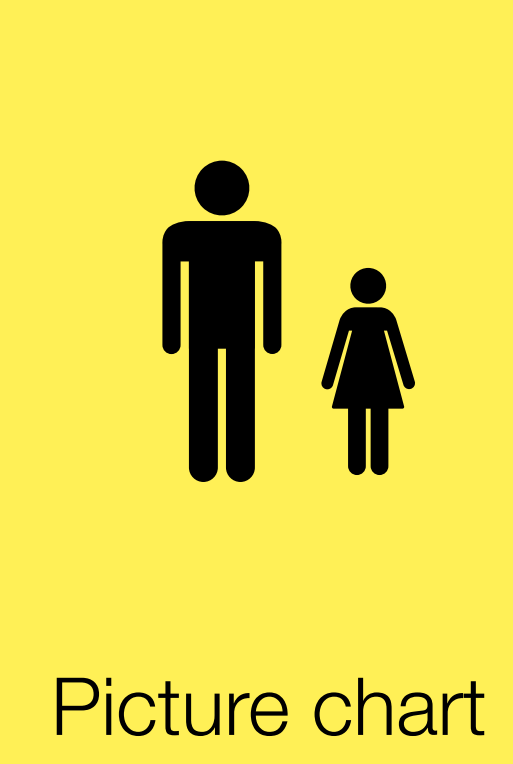
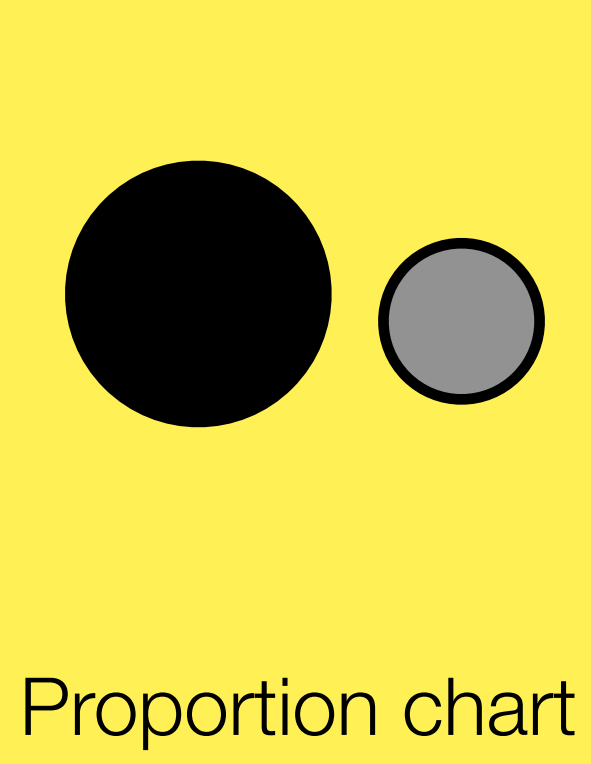
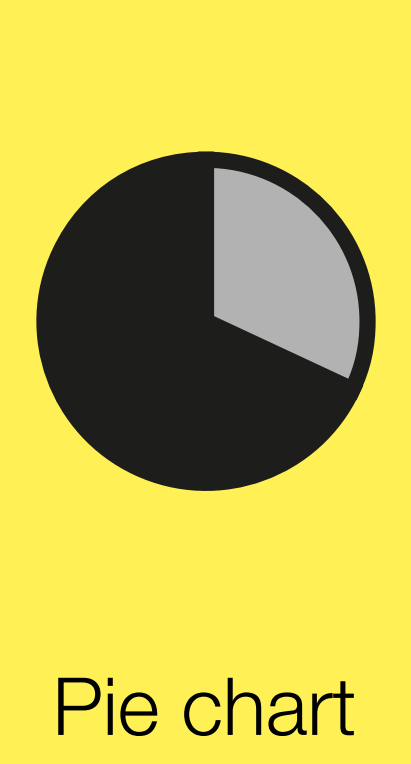
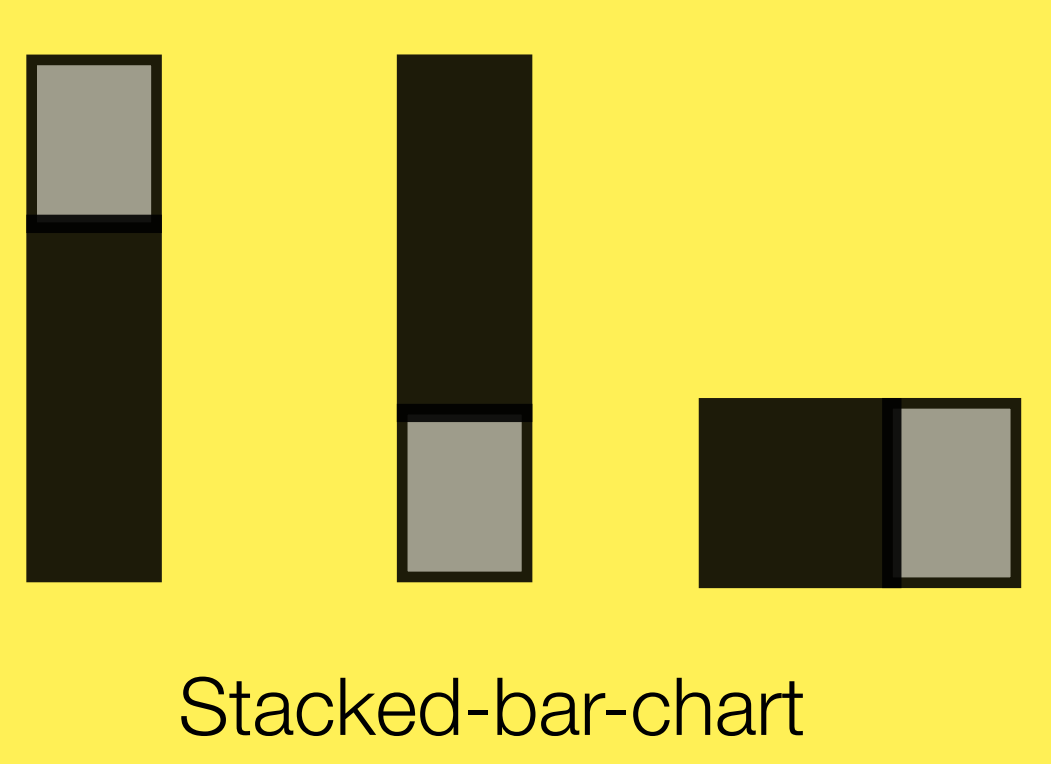
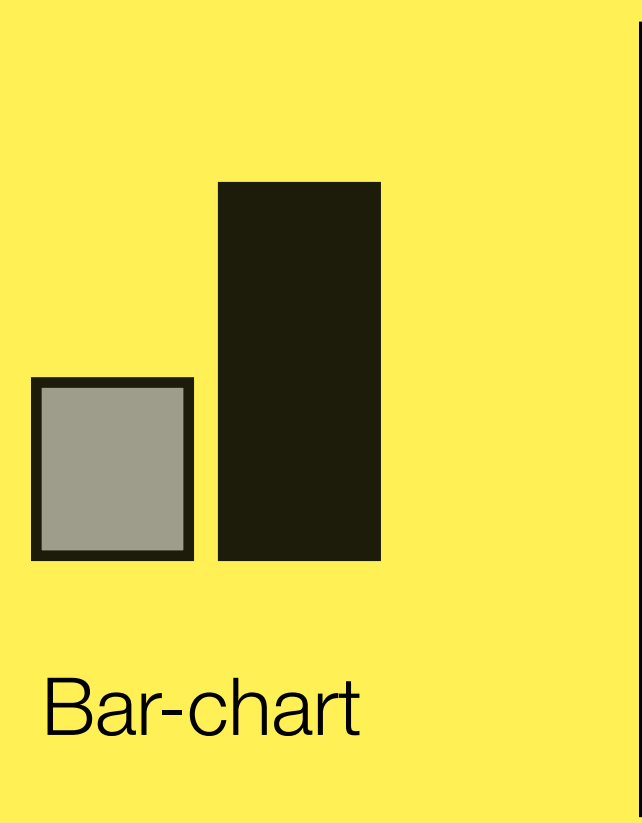
We take a look back into the past to focus on the gender distribution.

Tiny dataset:

	Woman	Man
Party Green	32 %	68 %

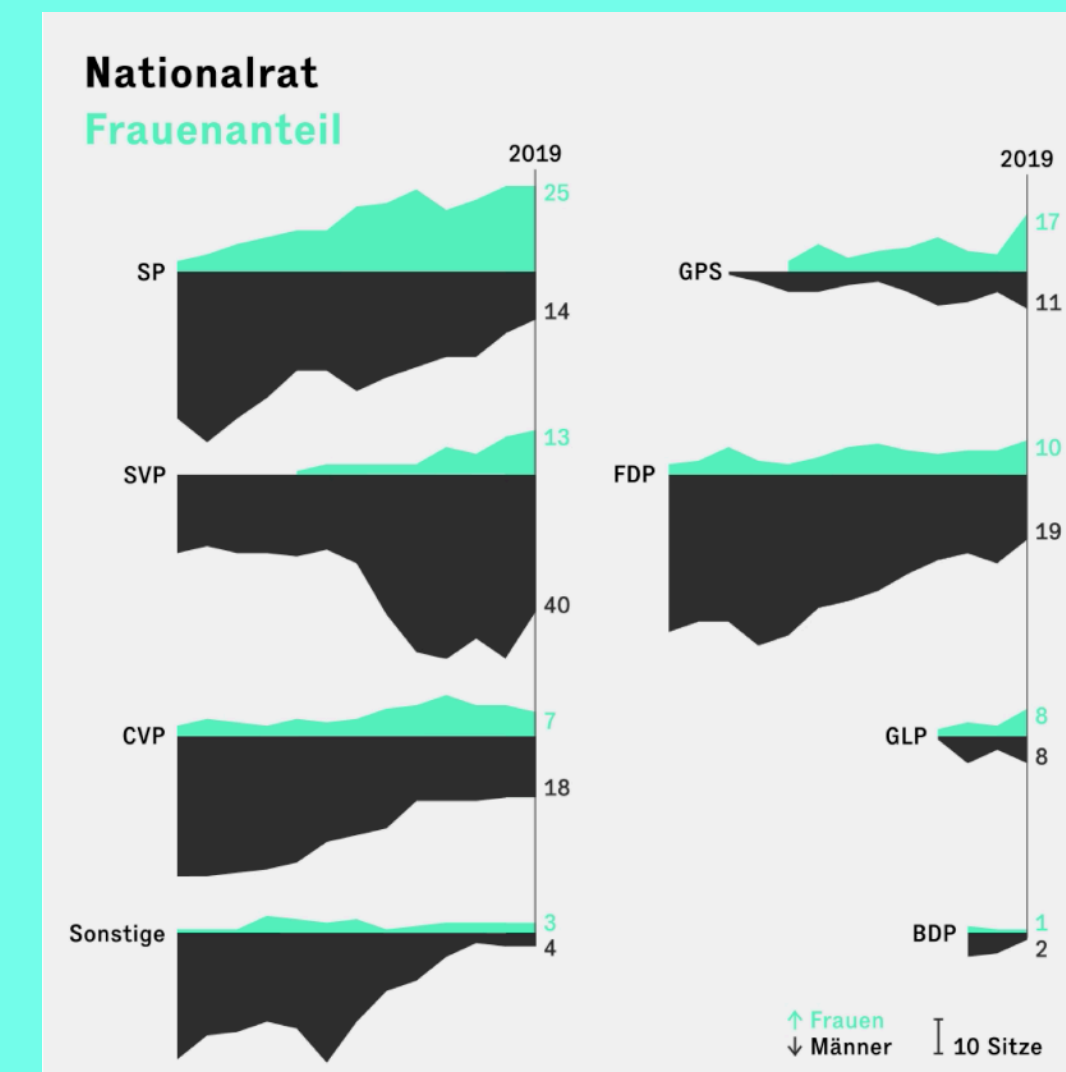
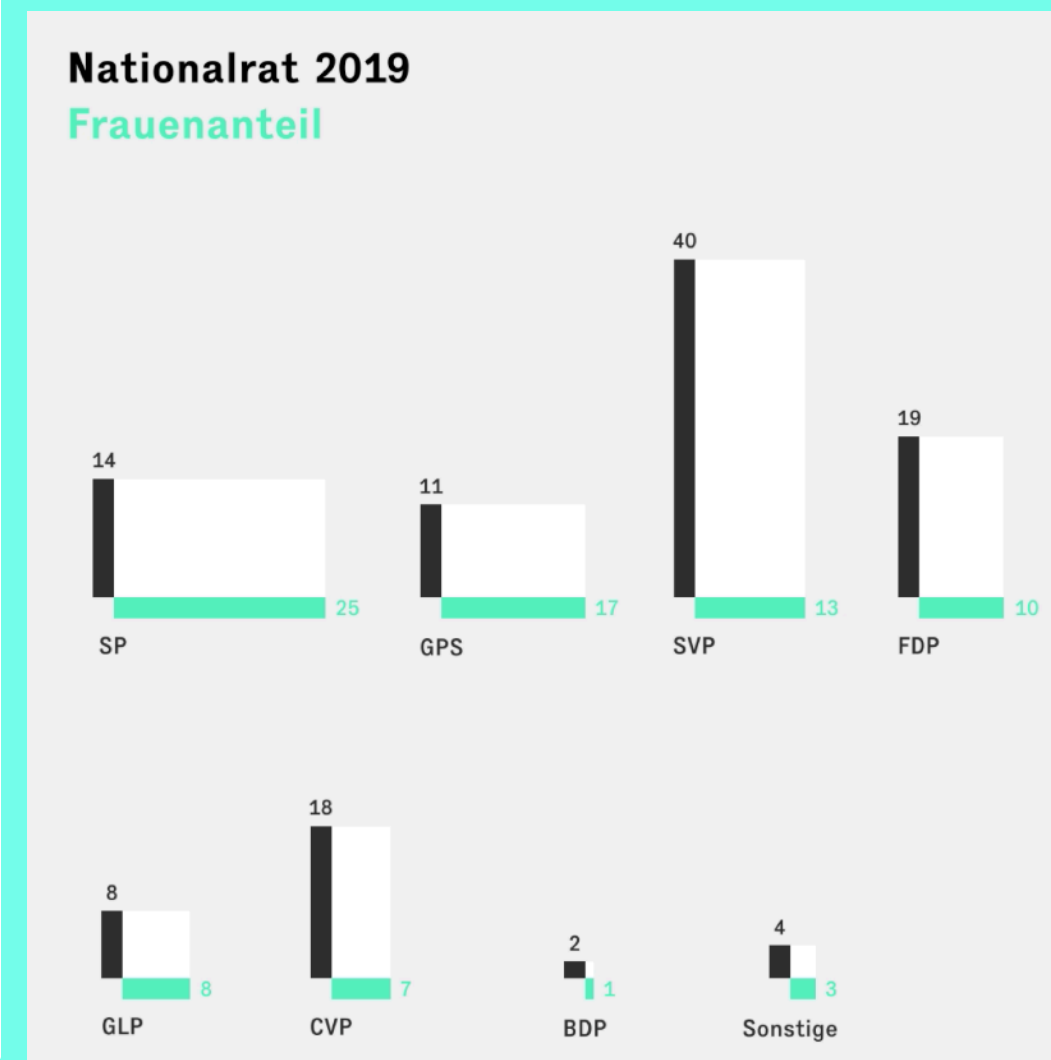
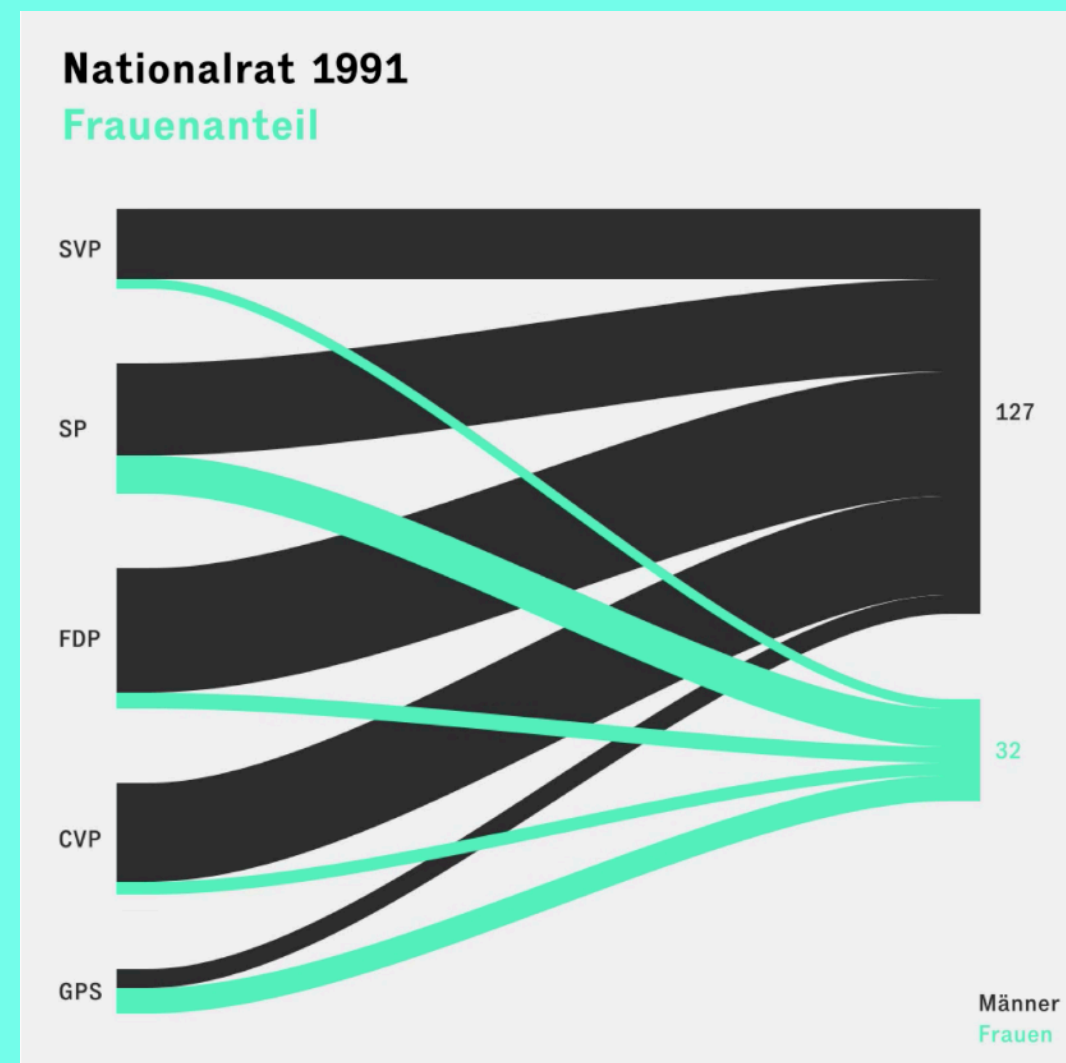
Exercise 2 - find a form for a small dataset

	Woman	Man
Party Green	32 %	68 %



Take a break

BREAK



https://hahn-zimmermann.ch/projekte/nationalratswahlen_2019

Forms and Functions

Different Chart-forms



Forms and Functions

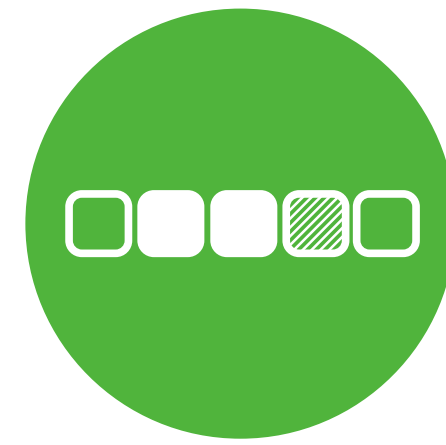
Functions



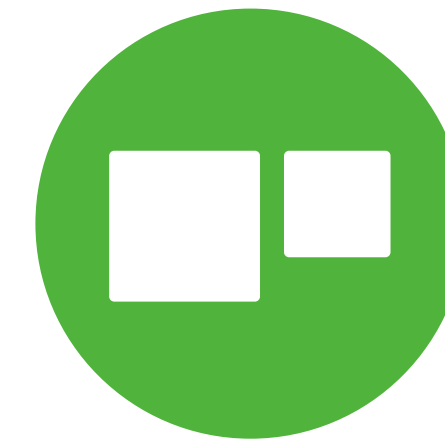
hierarchy



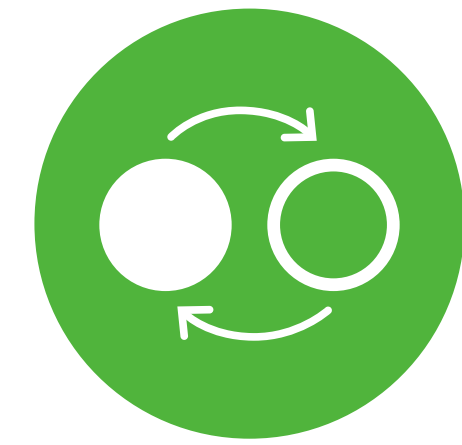
part_to_a_whole



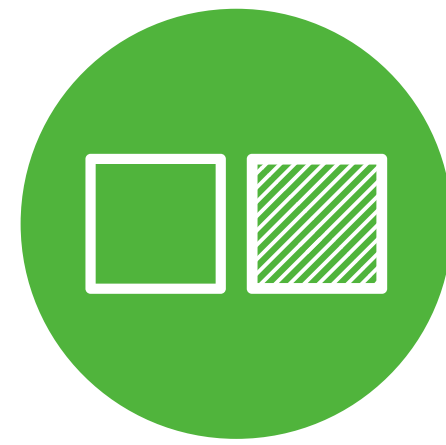
Patterns



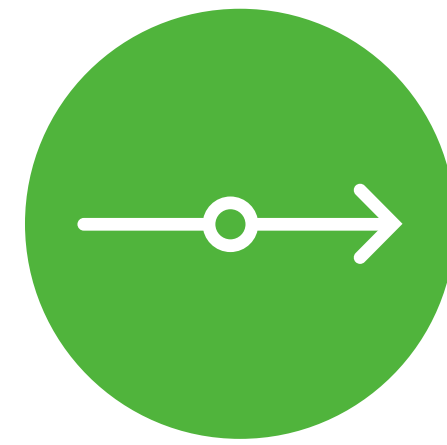
Proportion



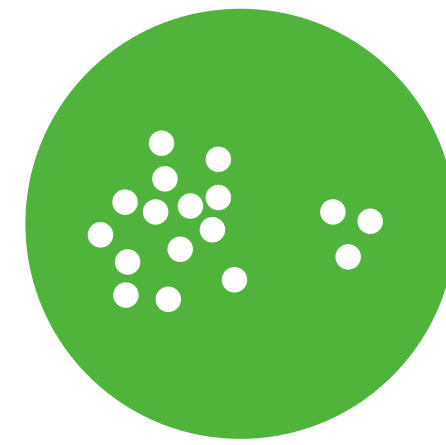
Relationship



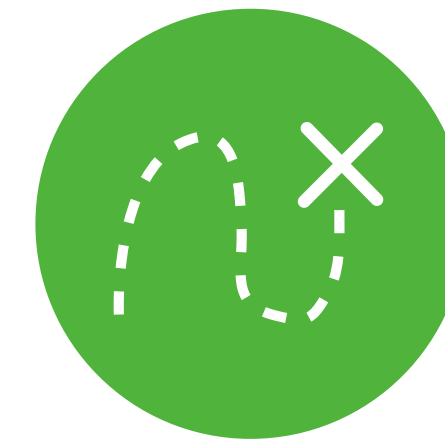
comparisons



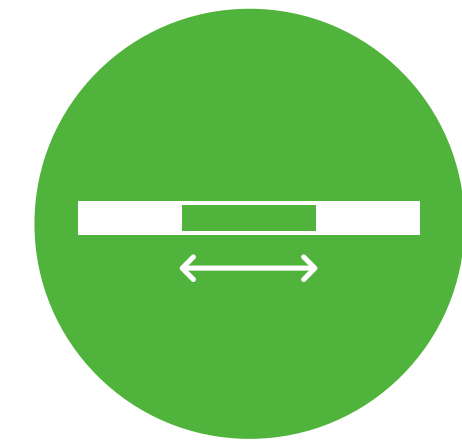
data_over_time



distribution



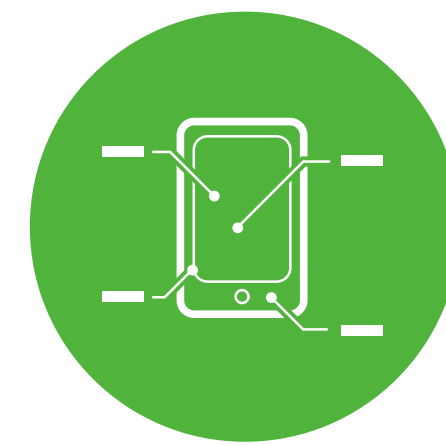
location



Range



analysing text



how_things_work



concepts



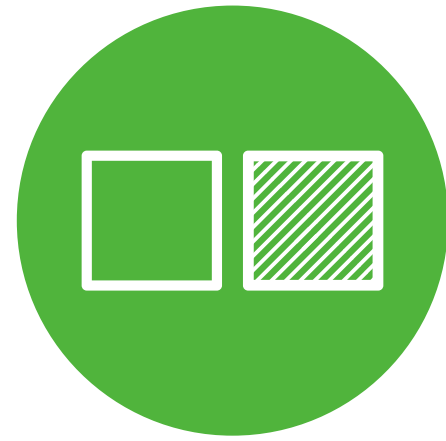
processes_and_methods

<https://datavizproject.com/>

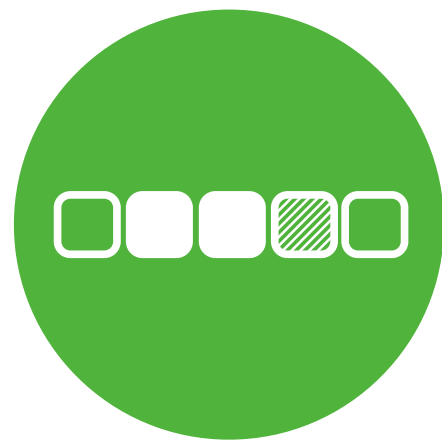
<https://datavizcatalogue.com/>



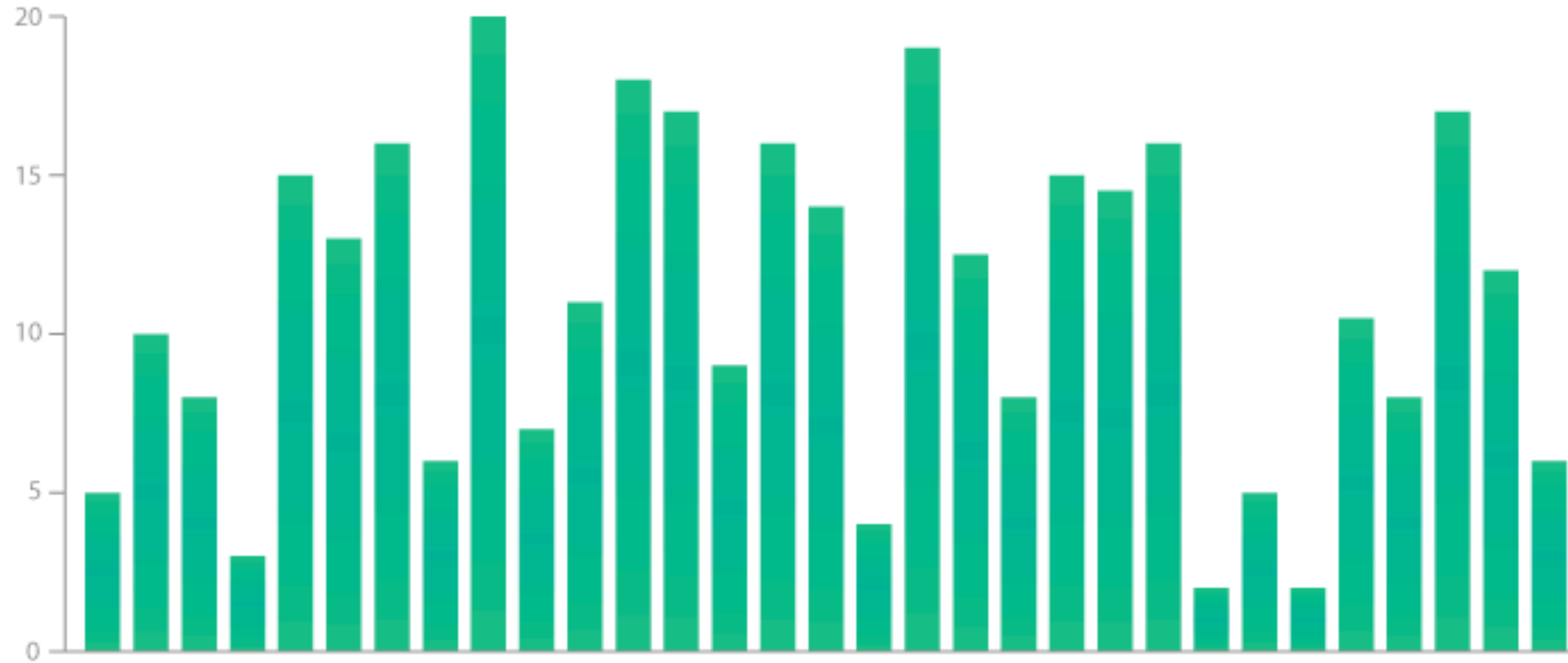
Bar chart



comparisons



Patterns



Multi-Set-Diagramm



Bevölkerungs-Pyramide



Radical Bar Chart

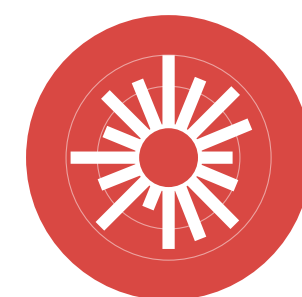


Chart Column Chart

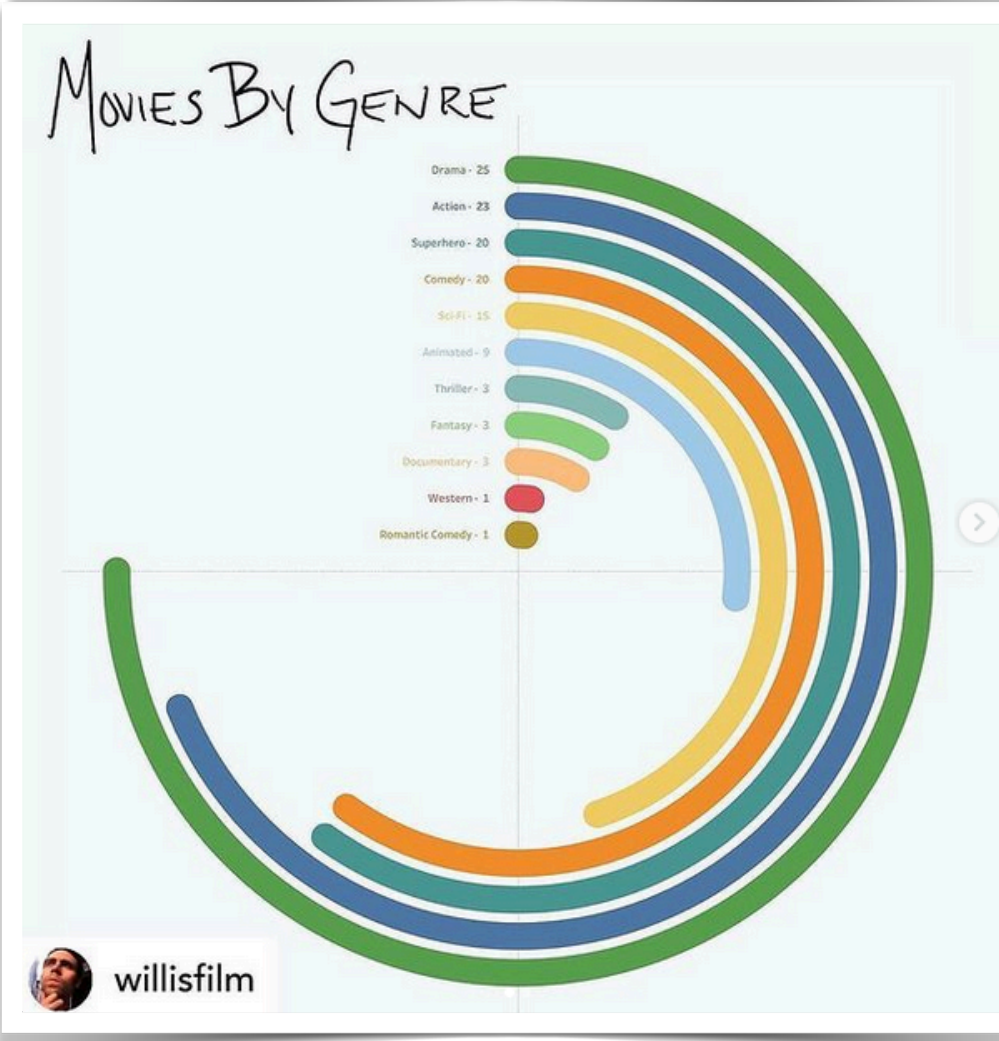


Linien Diagramm



Flächen-diagramm

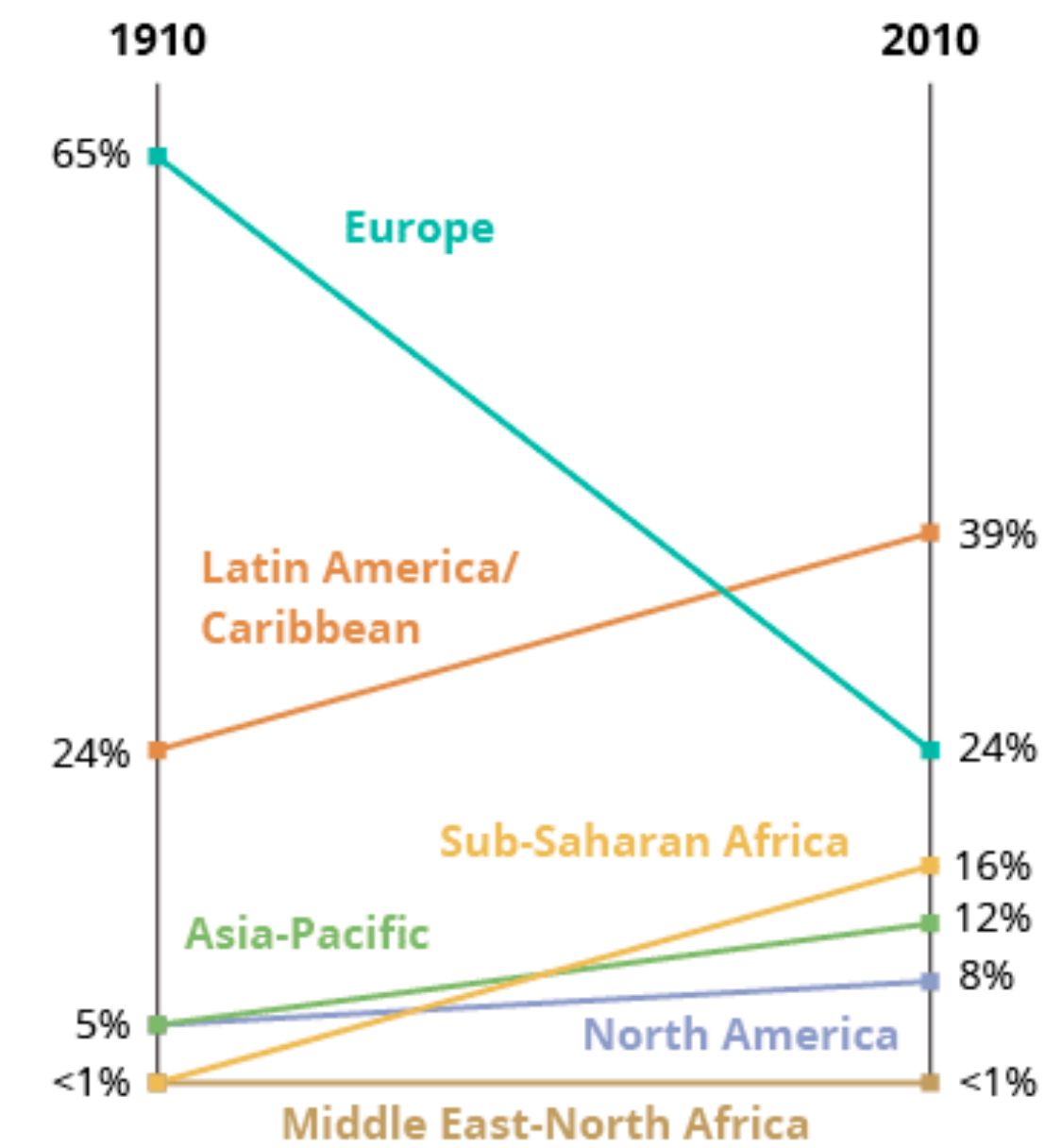
What kind of function and form



A Changed Church...

A century ago, most Catholics were European. Now, they're from all over the globe.

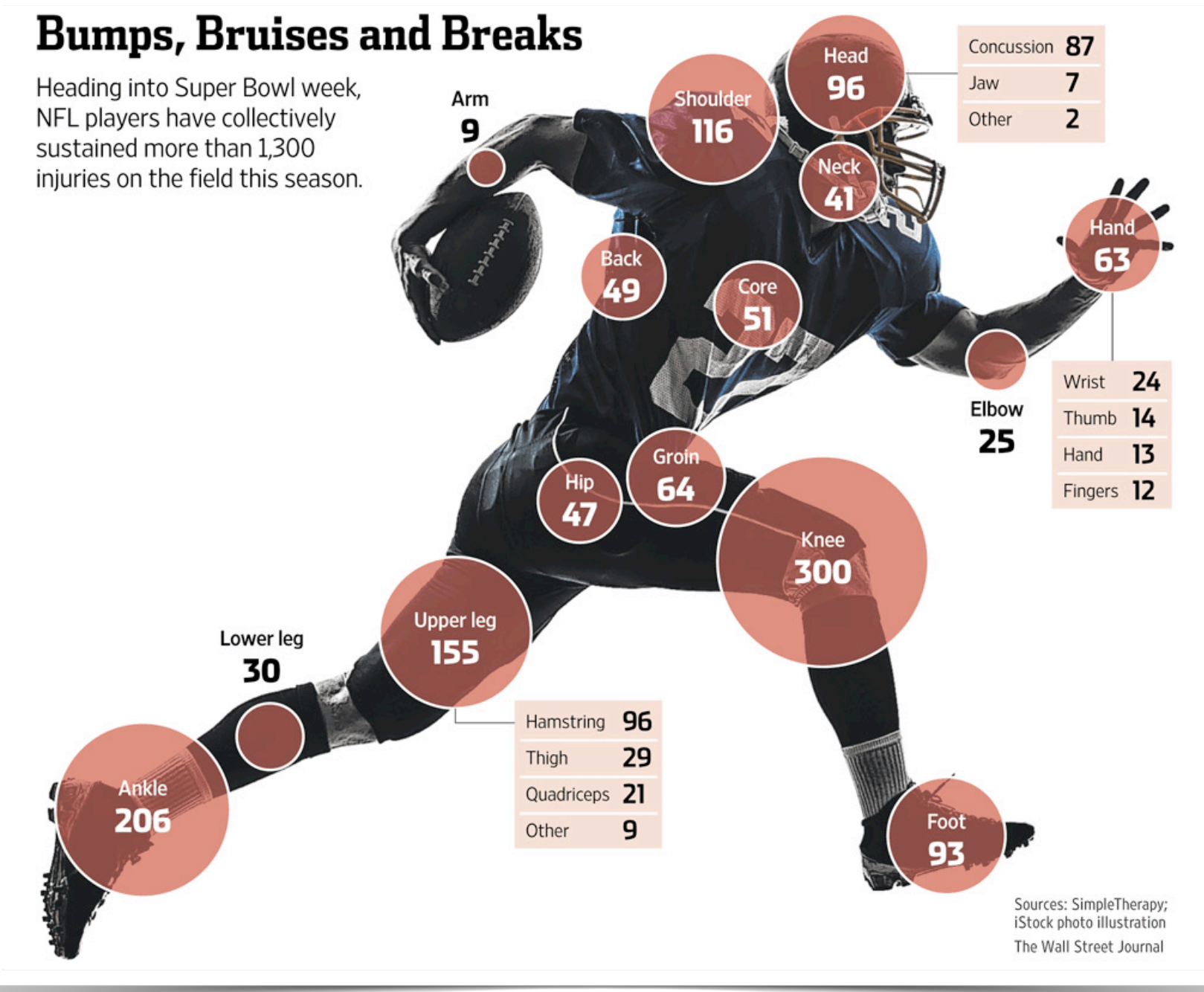
Regional distribution of Catholic population*



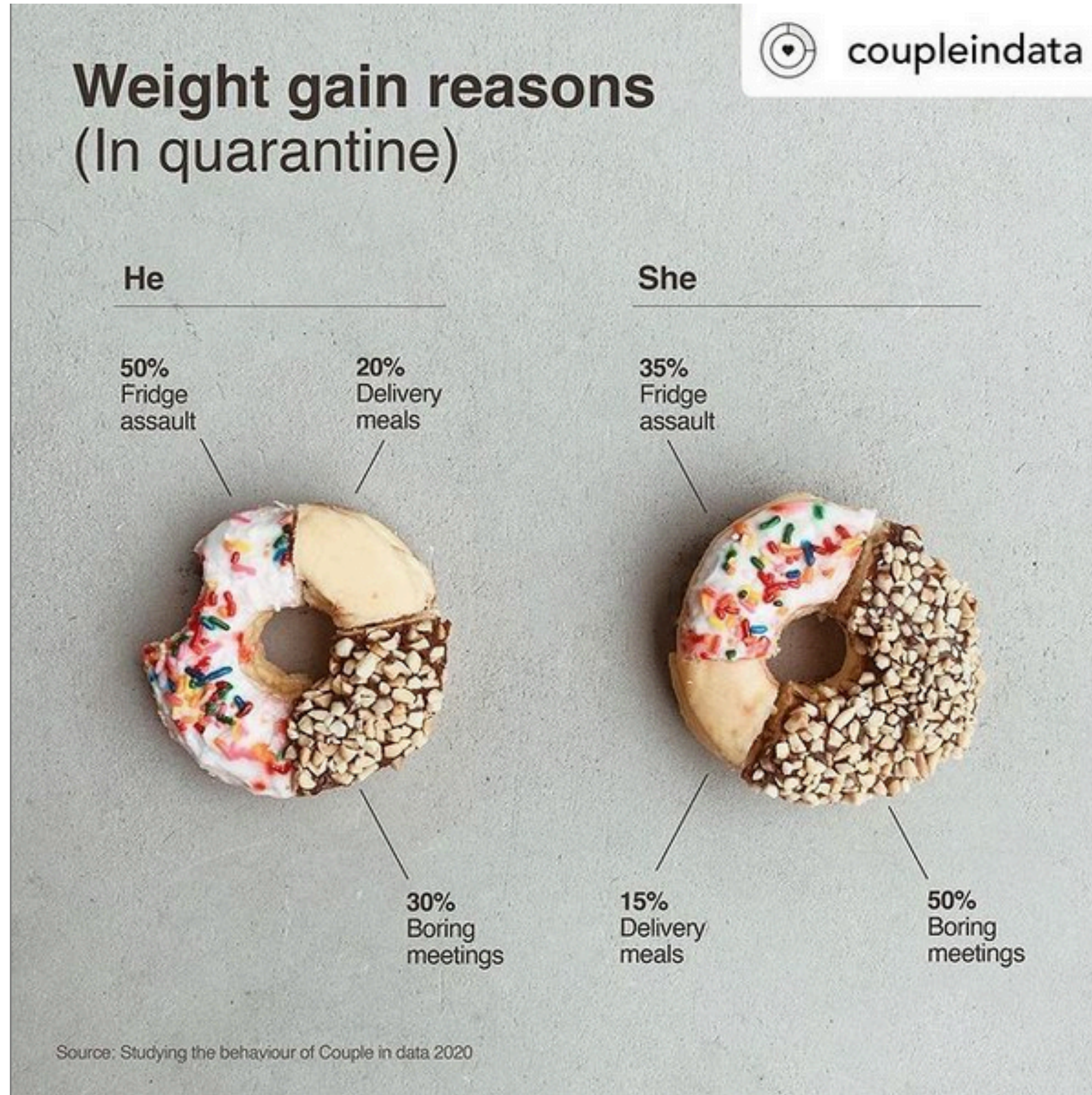
*Numbers may not add up to 100 due to rounding.

Bumps, Bruises and Breaks

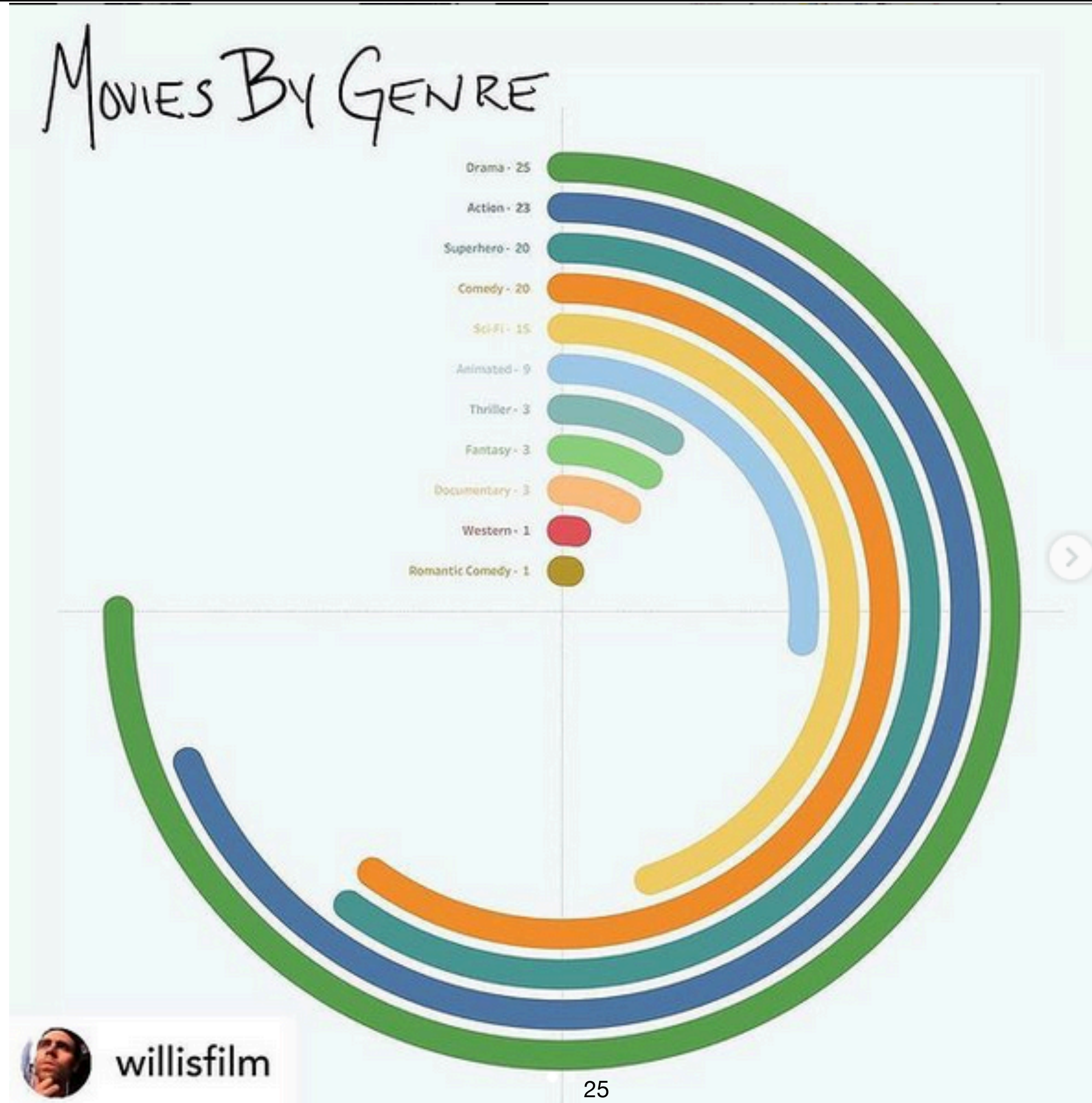
Heading into Super Bowl week, NFL players have collectively sustained more than 1,300 injuries on the field this season.



What kind of function and form



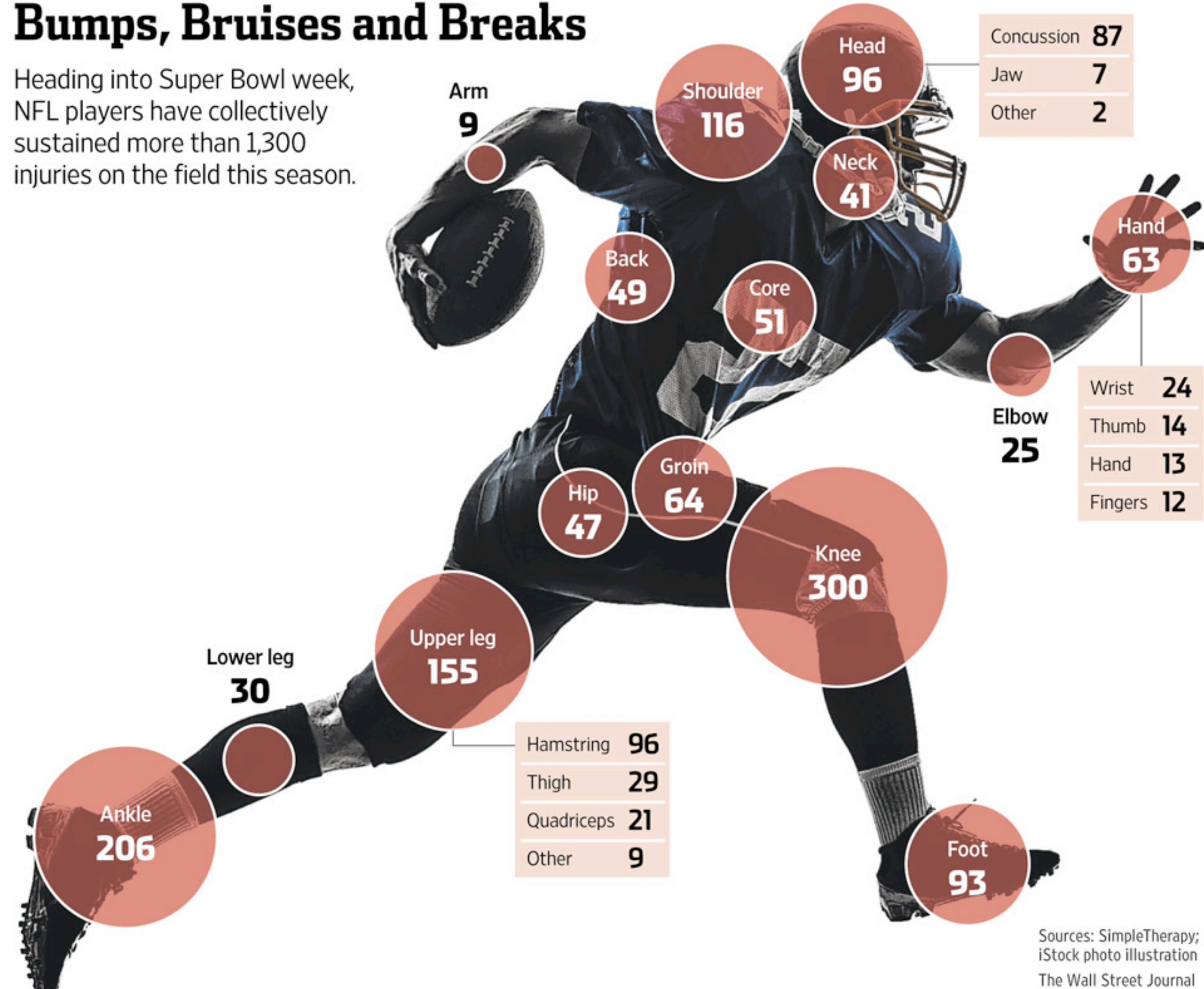
What kind of function and form



What kind of function and form

Bumps, Bruises and Breaks

Heading into Super Bowl week, NFL players have collectively sustained more than 1,300 injuries on the field this season.

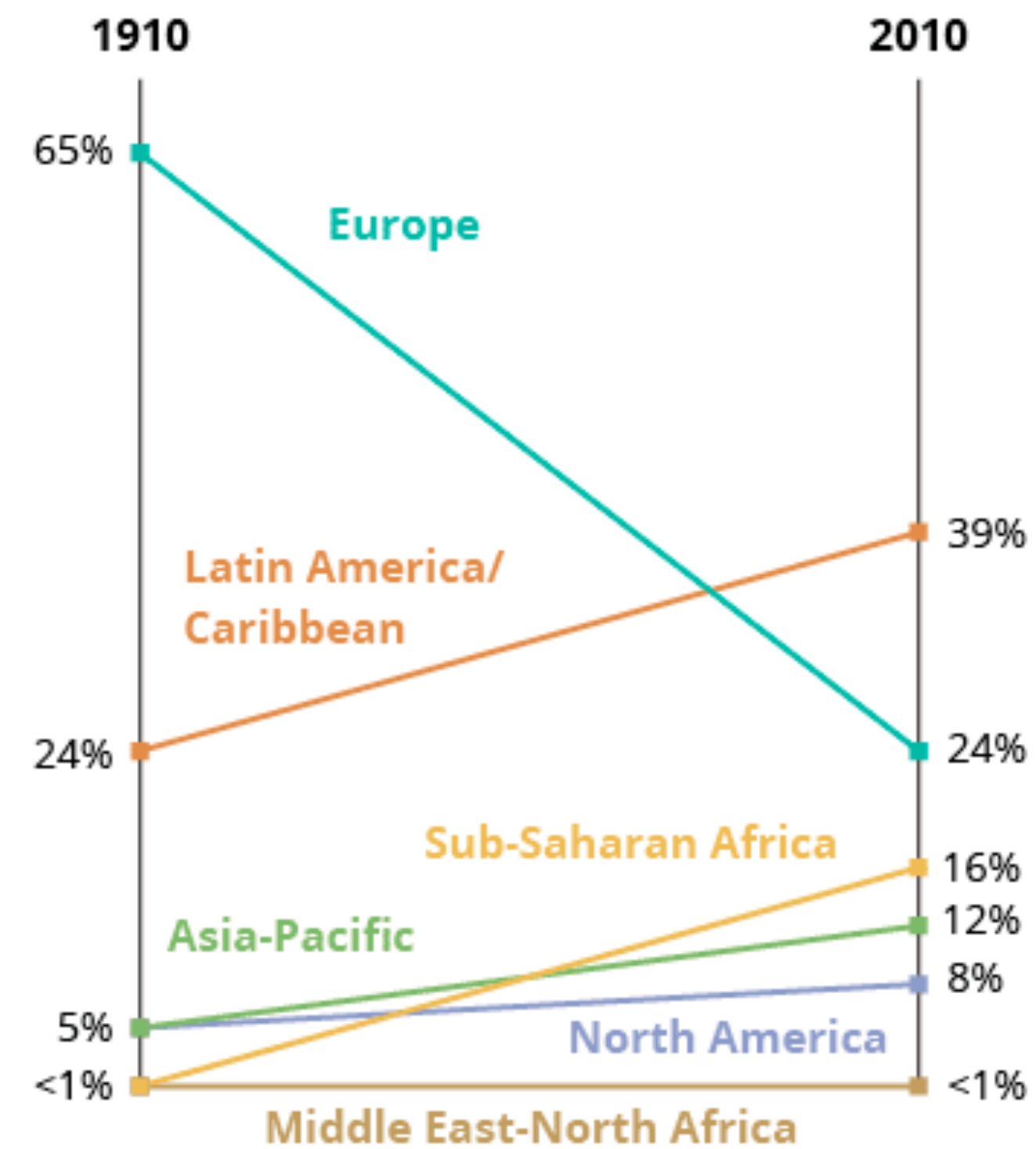


Sources: SimpleTherapy; iStock photo illustration; The Wall Street Journal

A Changed Church...

A century ago, most Catholics were European.
Now, they're from all over the globe.

Regional distribution of Catholic population*

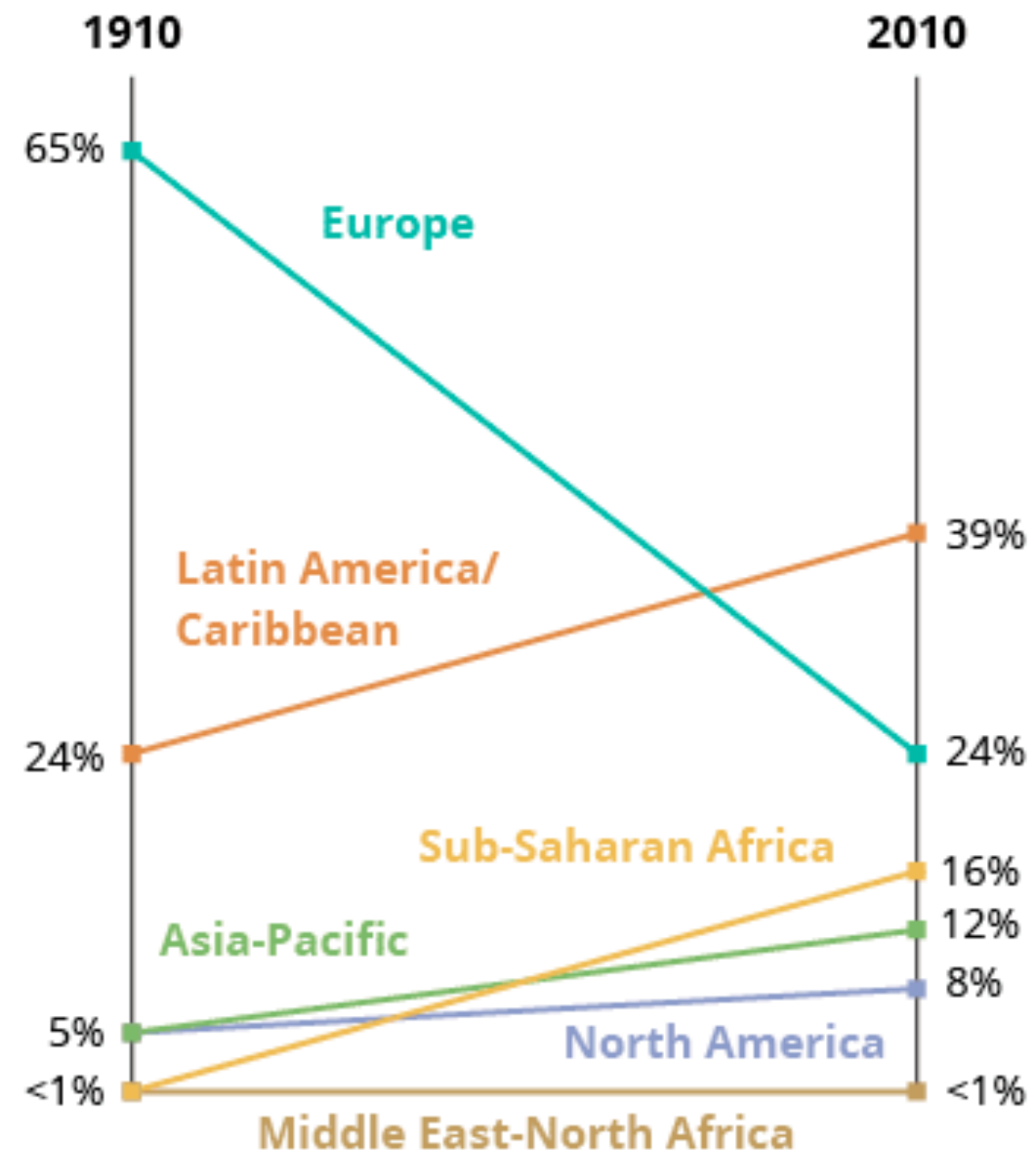


*Numbers may not add up to 100 due to rounding.

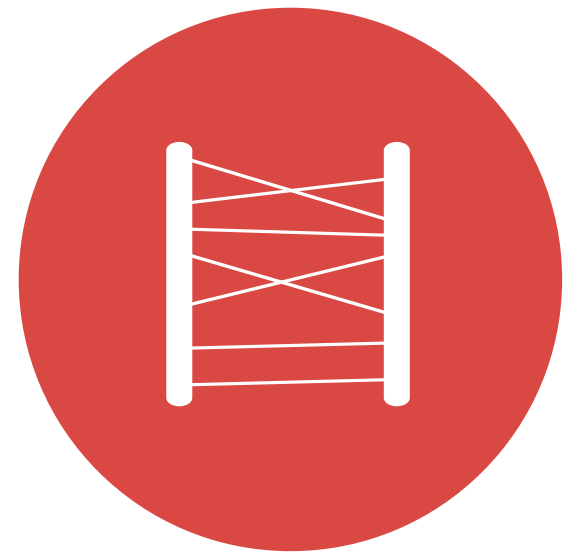
A Changed Church...

A century ago, most Catholics were European.
Now, they're from all over the globe.

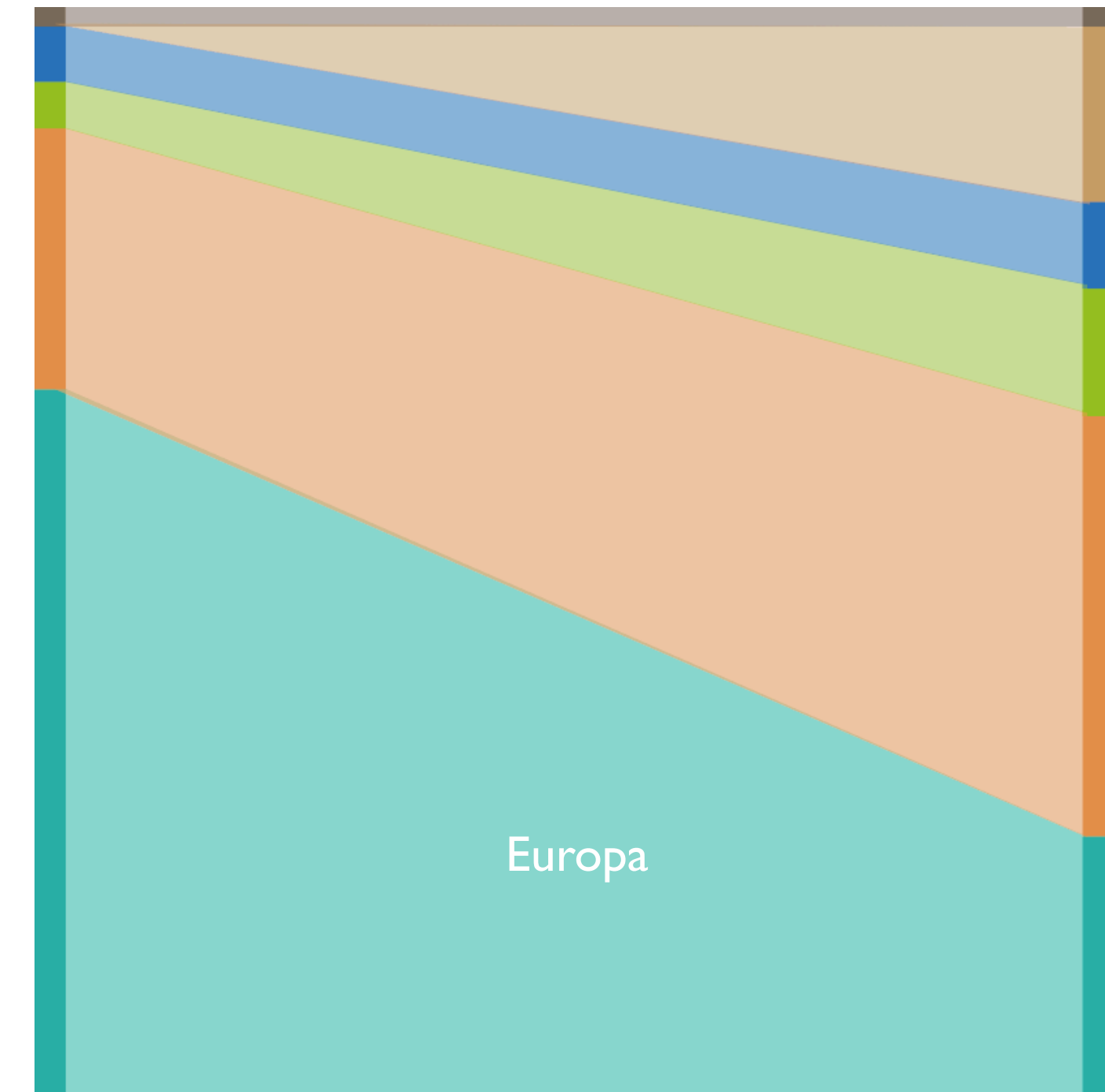
Regional distribution of Catholic population*



*Numbers may not add up to 100 due to rounding.

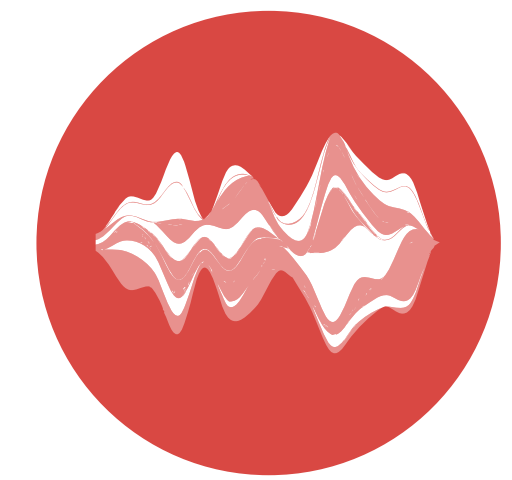


Scope Chart



1910

2010



Shape Diagramm

Exercise 3 - find a form for a complex dataset

German elections on next Sunday.
We take a look back into the past to focus on the
gender distribution.

Datasets of Group 1 and 2 on the next page

Exercise 3 - Group 1

Women in % in German parties in the parliament over 37 years

Parties	1990	2005	2017
CDU	13,8	19,9	20
SPD	27,2	36	41,8
FDP	20,3	24,6	23,8
GRÜNE	37,5	56,9	58,2
LINKE	47,1	48,1	53,6

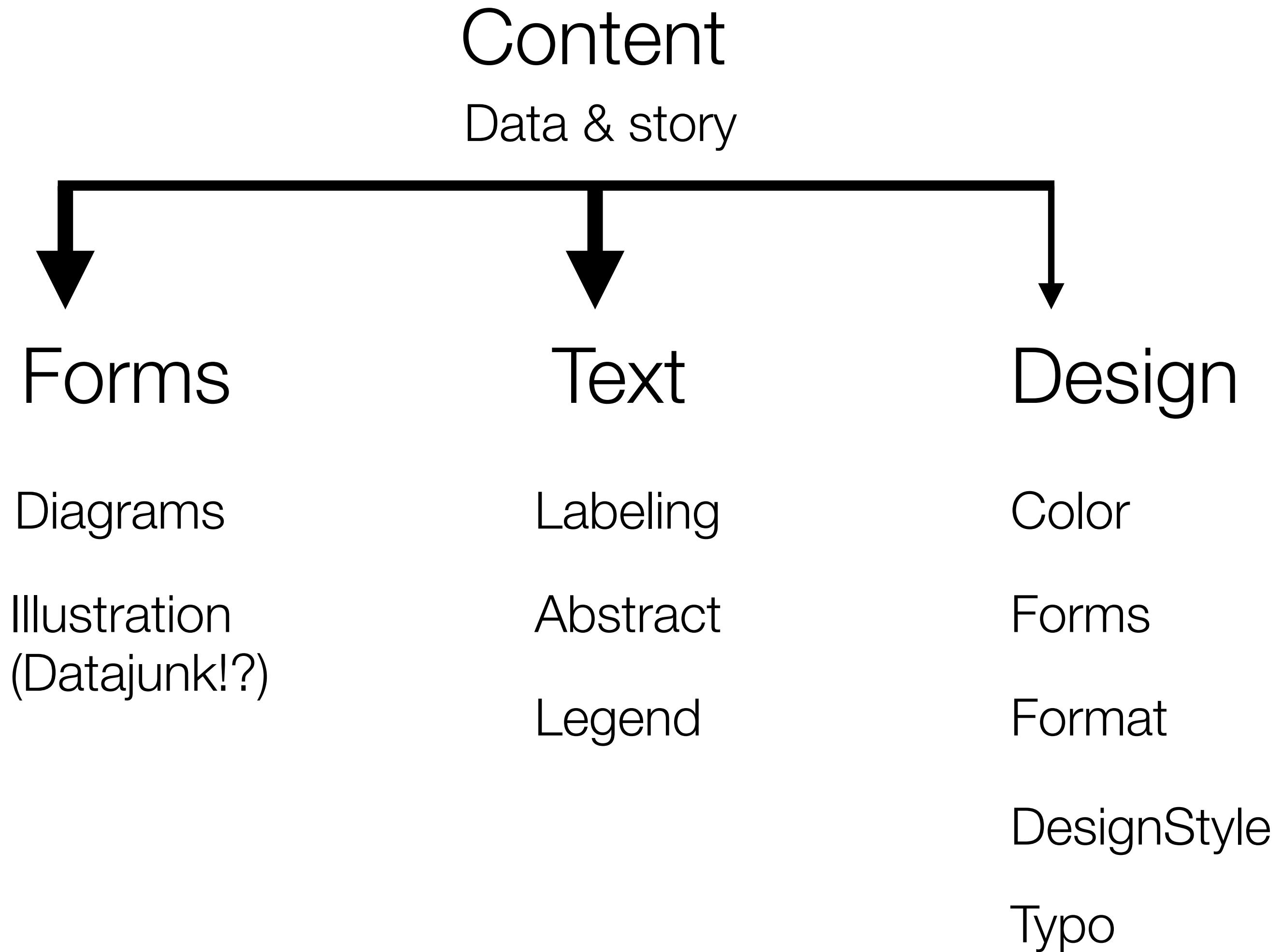
Exercise 3 - Group 2

Elections 2017 - Vote in % and gender distribution of the parties

Party	Vote in %		Women %	Men %
CDU	32,9		20	80
SPD	20,5		41,8	58,2
FDP	10,7		23,8	76,2
Grüne	8,9		58,2	41,8
Linke	9,2		53,6	46,4
AfD	12,6		10,5	89,5

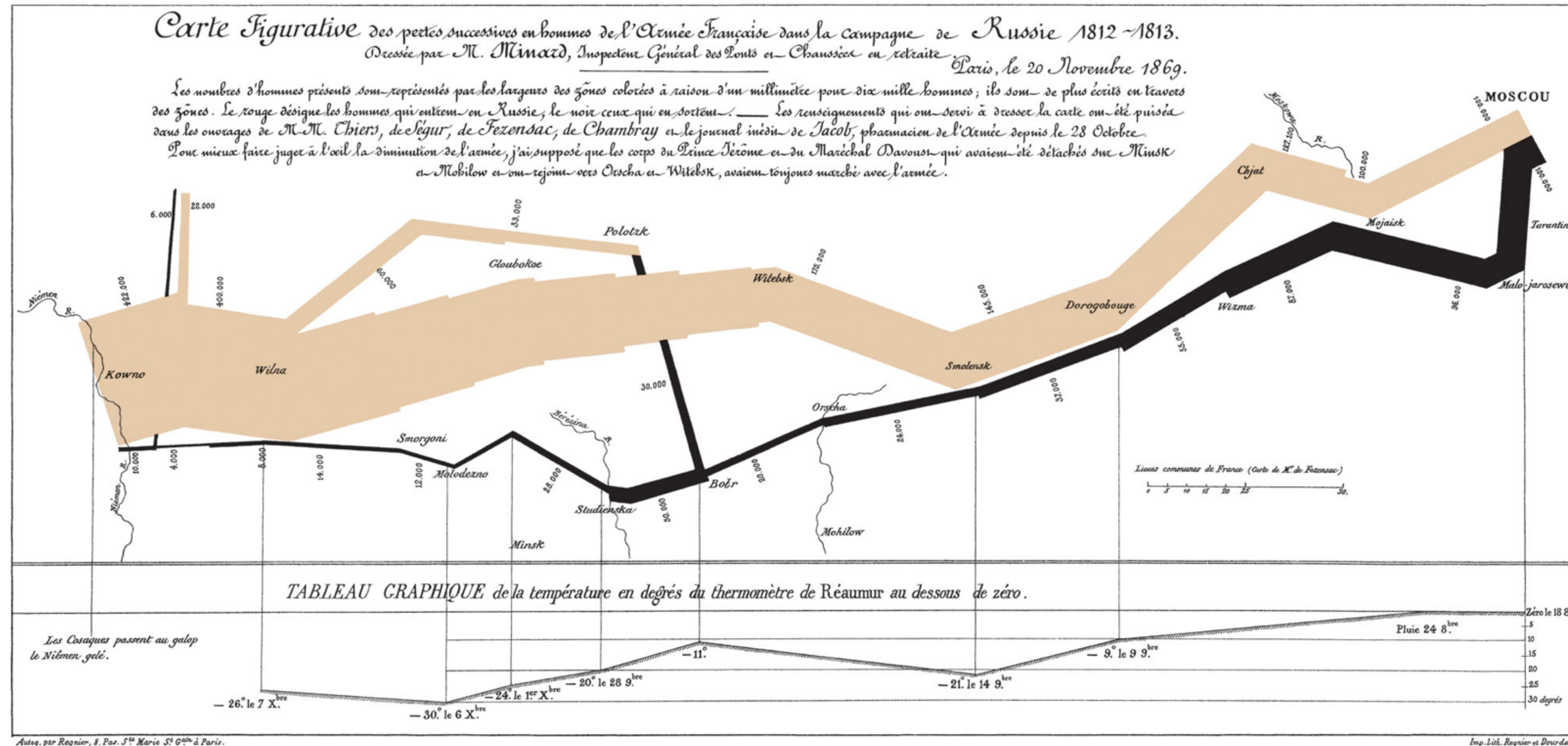
BREAK

Elements of an infographic



Elements of an infographic

Form + Text + Values = Infographic



Only Forms = Illustration